



**THE ONE-STOP SHOP FOR  
WORK ZONE SAFETY.**

--- 2025 CATALOG ---











# ONE PHONE CALL FULFILLS EVERY WORK ZONE NEED.



Road construction. Road repair. Special events. Emergency situations. They all require planning, crews, and equipment. AWP Safety is your premier resource. We save you time and money by doing the job right, every step of the way.



## SAVE TIME

- You'll be working with responsive experts, from start to finish.
- We handle planning and permits, on your schedule.
- Project managers coordinate crews, delivery, and movement of equipment.



## SAVE MONEY

- Quality and affordable equipment for rent or purchase.
- Experts will identify exactly what you need, in your budget.
- We simplify complex projects and deliver outstanding results.



## FAST RESPONSE

- A fleet of over 620 traffic control equipped vehicles.
- Retail stores, warehouses, and crews in local markets.
- Response within two hours to over 1,000 emergencies annually.



## WORK ZONE

### TURN-KEY TRAFFIC CONTROL SOLUTIONS

- Temporary and permanent work zone management
- Zone design / setup
- Flagging
- Work area protection
- 24/7 emergency service



### 24 / 7 / 365 CAPABILITIES

- Dedicated system-wide dispatch
- Field representative access
- Local team / equipment access
- Integrated network



### EMERGENCY RESPONSE

- Traffic accidents
- Power outages
- Weather-related disruptions
- Hazardous material incidents
- Road closures / detours



### SPECIALIZED SERVICES

- Consulting services
- Scaled drawings
- Permit acquisition
- Sign / equipment rental
- Procurement of police services



### SAFETY FIRST

- Industry-leading safety record and associate training standards.
- We have an ATSSA master trainer on staff.
- Experienced with all state and local regulations.



### PAVEMENT MARKING SUPPLIES

- Temporary signs, stands, accessories
- Barricades, lights
- Crash cushions, barriers, attenuators
- Cones, delineators, channelizers, drums
- Signs – standard, custom, hardware, posts
- Personal protective equipment
- Traffic control equipment
- Specialty products



### SIGNAGE CATEGORY LISTINGS

- MUTCD compliant traffic control signage
- Street name signs
- Custom signs
- Parking signs
- Emergency & safety signage
- Guide signs
- Hardware & component supply



### SIGNAGE SERVICES

- Graphic design
- Silk screen printing
- Digital printing
- Welding & fabrication
- Certified sign fabricator warranty
- Mounting hardware fabrication
- Custom routing



### CONTACT US

Talk to someone  
**1 (800) 343-2650**

Visit our website  
**[awpsafety.com](http://awpsafety.com)**



## AWP SAFETY SIGN DIVISION



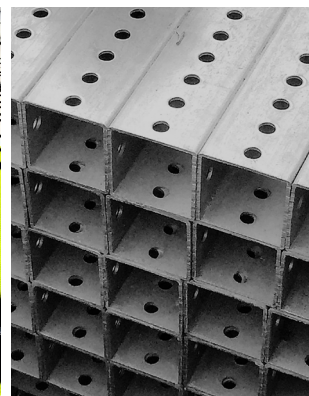
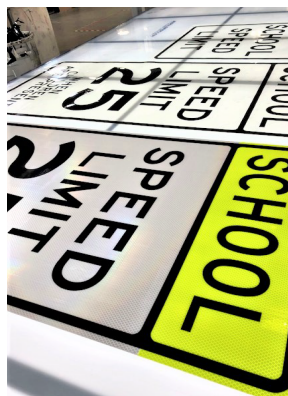
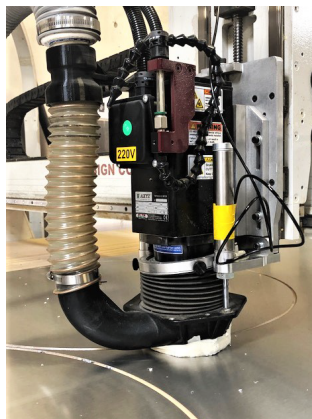
AWP Safety can help you determine the right signs and installation specifications for your project. Our extensive knowledge of current MUTCD and State DOT specifications ensures that your sign installations will be in compliance with state and local regulations. Our products include MUTCD Compliant traffic control signs, street name signs, custom signs, work zone signs, commercial and industrial signs, logos, sign hardware, decals, and sign making materials.

### SIGN CATEGORIES

- MUTCD Traffic Signs
- Custom Signs
- OSHA Compliant Signs
- Street Name Signs
- Laminated Overhead Panels
- Laminated Ground Mounts
- Formed Overhead Panels
- Wayfinding
- Construction Area Signs
- Temporary Message Signs
- Cone Top Signs
- Pavement Marking Stencils
- Sign Posts & Mounting
- Mounting Hardware
- Gas Line Markers
- Pipeline Markers
- Roll Up Signs
- Braille & Tactile

### FABRICATION & SERVICES

- Digital Printing
- Silk Screen Printing
- Cnc Routing
- Aluminum & Steel Welding
- Direct Application
- Custom Fabrication
- Graphic Design
- Sign Making Materials
- Powder Coating
- Quality Control Program



Over 160 locations across 28 U.S. states and  
four Canadian provinces

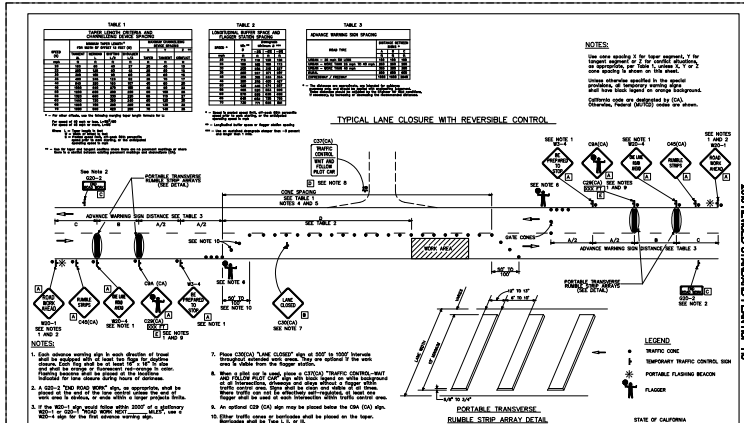


# Traffic Control / Installation Services

## Traffic Plans & Permitting Assistance

Our traffic control experts can help you in every phase of the planning and permitting process. We can survey the location and design the appropriate Traffic Control Plan for your work zone or event that conforms to the State and Federal Manual of Traffic Control Devices (MUTCD). We can promptly produce traffic planning for your project or special event whether a short term lane closure or a long term multi-phase project.

Our experienced engineering departments work closely with local municipalities, and State DOTs to assist in the permitting process and ensure compliance on your project. We can help you in obtaining street use and encroachment permits as well as assisting in securing the required insurance documentation.



## Lane Closures & Flagging Services

Our well-trained, dedicated professional staff has extensive experience in single-lane closures, multi-lane closures, two-direction lane closures and moving work zone traffic staging.

We will set up, maintain, move and remove devices and equipment as required for your project, 24/7. Our modern fleet of equipment and devices will provide an added level of visibility to your work zone.

We can handle any size job from a residential street to major Interstate Highways. Our professional Flaggers are trained and certified by the American Traffic Safety Services Association (ATSSA).

With multiple locations throughout the west and our extensive resources, we can supply all of your traffic control needs when and where you need them, so you can focus on your projects.



## Detours, Freeway & Road Closures

Our well-trained expert crews have extensive experience in setting up detours, road closures and major freeway closures. With the largest fleet of traffic control equipment in the west, AWP Safety can provide resources to support even the largest projects. We can provide advance notification over a wide area with our large inventory of construction signs and electronic Message Boards.

We will provide proper placement, maintenance and removal of all traffic control devices required to protect the work zone on your project. Our Project Managers work closely with your company to coordinate timely staging of traffic and movement of traffic control devices. Whether your job is a quick turnaround or a long term project, AWP Safety has the resources you need, when you need them.



## Roadside, Street & Overhead Sign Installations

The experts at AWP Safety can help you determine the right signs and installation specifications for your project. Our extensive knowledge of current MUTCD and State DOT specifications ensures that your sign installations will be in compliance with state and local regulations.



## Crash Cushion & Attenuator Installations

The experts at AWP Safety can help you determine the crash cushions and installation specifications for your project. Our extensive knowledge of current MUTCD and State DOT specifications ensures that your crash cushions installations will be in compliance with state and local regulations.



## Traffic Channelizer & Delineator Installations

The experts at AWP Safety can help you determine the right channelizers and roadside delineators for your project. Our extensive knowledge of traffic control devices and traffic planning ensures compliance with state and local regulations.



## Scorpion Vehicle Attenuator Installations

Ask About Mash Eligible Products





# Work Zone Rentals

## Temporary Crash Cushion Rentals



## Temporary Channelizer Rentals



## Temporary Barrier Rentals



## Temporary Barricade & Flashing Beacon Rentals



## Equipment Rentals



## Construction Sign & Rumble Strip Rentals





# Rental Equipment and Repair

## Temporary Installation Services

The experts at AWP Safety can help you determine the right signs, equipment and supplies for your project. Our extensive knowledge of traffic control signs and traffic planning ensures that your jobsite or event will be in compliance with state and local regulations.

Our multiple locations throughout the west enable us to provide temporary installations when and where you need them. With our extensive resources, we can handle any size project, 24/7, short term or long term.

We can deliver, install, maintain on-site and remove as needed, on your schedule so you can focus on your project.

## Temporary Crash Cushions



## Temporary Barriers



## Roadside Construction Signs



## Temporary Channelizers



## Equipment Repairs

Our well-trained expert mechanics have extensive experience in repairing traffic control equipment, line strippers and more. Our skilled technicians can repair and replace damaged components on most types of equipment.

We can service your equipment in-house or on-site so you can keep your job going. With our extensive resources, we can handle all of your equipment and traffic control device repairs so you can focus on your projects.

## Graco Equipment Repairs



## Impact Attenuator Repairs



## Message & Arrow Board Repairs



## Truck Mounted Attenuator Repairs





# Crash Cushions and Barriers



## TAU-M Crash Cushion

MASH TL-3 AND TL-2 TESTED.

The Redirective, Non-Gating, TAU-M Crash Cushion is designed to meet MASH TL-3 and TL-2 testing requirements in a compact, partially reusable design. The system is available for concrete and asphalt applications and can shield hazards with widths up to 30" (880 mm). Ease of installation, fast on-sight repairs, and numerous transition options make the TAU-M system an ideal crash cushion to shield most roadside and median hazards. The TAU-M system is also available as an upgrade kit to retrofit existing NCHRP 350 TAU-II Systems into MASH TAU-M Systems.



## ABSORB-M™ Mash Crash Cushion

**MASH Acceptance**

No ground anchoring, easy deployment and removal, and the shortest length in its class make the ABSORB-M system the contractor's choice for a work zone-ready MASH crash cushion. It uses interchangeable, nested elements to reduce inventory costs as well as a universal transition to simplify and speed up installation. At 24" (61 cm) wide, this system is best suited for narrow, tight-fit areas to shield anchored or unanchored barriers up to 42" tall in temporary construction work zone applications.

- One interchangeable element for T-2 and TL-3
- Shortest MASH TL-3 non-redirective, anchorless crash cushion (21')
- Acceptable for use on anchored and unanchored barrier
- Meets MASH TL-2 and TL-3 test criteria



## ArmorGuard™ Movable Steel Barrier & Barrier Gate

The ArmorGuard Movable Steel Barrier is designed for short term - short duration work zones where maximum portability and low deflection is needed. The ArmorGuard System can be quickly and easily opened and positioned without electricity or heavy equipment. Sections can also be attached or joined in combination with Portable Concrete Barrier to create controlled access gates. The ArmorGuard Barrier meets all NCHRP 350 TL-3 criteria as a longitudinal barrier.



## ArmorGuard™ Steel Barrier Gate

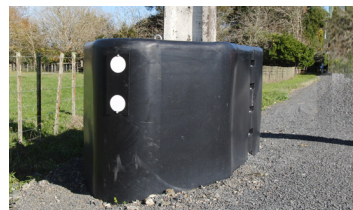
The ArmorGuard Steel Barrier Gate is a heavily reinforced gate designed for emergency openings, contraflow applications and workzone access. The steel barrier gate system can be safely opened or closed in under 2 minutes using only manual power. Optional pneumatic jacks can be added to make opening the gate even faster. The ArmorGuard Steel Barrier Gate meets all NCHRP 350 TL-3 criteria as a longitudinal barrier.



## DR-46 Motorcycle Barrier Attenuator

The DR-46 Motorcycle Barrier Attenuator (MBA) is designed to attach to standard roadside guardrail to protect errant motorcyclists from the guardrail post during a fall or collision.

The DR-46 can greatly decrease the injury and fatality rates of motorcycle guardrail accidents without interfering with guardrail performance. The DR-46 Motorcycle Barrier Attenuator is a physically flexible system that can follow radius curves as low as 15 m (50').



## RAPTOR™ Crash Cushion for Poles and Trees

The RAPTOR System is designed to reduce the severity of errant vehicle impacts with a utility pole or tree. The RAPTOR System uses weather resistant energy absorbing material surrounded by a UV stabilized polyethylene shell to shield poles and trees located on the roadside. It can be installed at many sites that do not have the space needed for a traditional impact attenuator and does not require a foundation. The RAPTOR 300 & 600 Systems meet NCHRP 350 TL-1 criteria as non-redirective impact attenuators.



# Guardrail Components / End Terminals

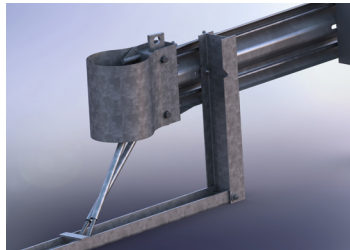


## MAX-Tension™ TL-2 End Treatment

### Mash TL-2 Non-Gating Guardrail End Treatment Featuring Sabertooth™ Technology

The MAX-Tension™ TL-2 tangent guardrail terminal, with Sabertooth™ technology, features the next level of impact performance and an ultra-slim design. The system utilizes a tension-based design along with an energy absorbing coupler that features an all new cutting tooth design. When impacted head-on, deceleration is controlled by friction developed in the tension cables and by cutting the downstream guardrail panels. When a side impact occurs, tension cables can help safely redirect a motorist away from the hazard.

In addition, the MAX-Tension terminal utilizes standard guardrail components and shares many "smart parts" with other MAX-Tension Terminal designs for significant savings in inventory and maintenance costs. Nuisance impacts during snow removal and maintenance operations can also be minimized due to the narrow design of the MAX-Tension impact head.



## MAX-Tension™ TL-3 End Treatment

### Mash TL-3 Compliant Guardrail End Treatment Featuring Sabertooth™ Technology

The MASH compliant MAX-Tension™ tangent end terminal, with Sabertooth technology, features the next level of impact performance and an ultra-slim design. The system utilizes a tension-based design along with an energy absorbing coupler that features an all new cutting tooth design. When impacted head-on, deceleration is controlled by friction developed in the tension cables and by cutting the downstream guardrail panels. When a side impact occurs, tension cables can help safely redirect a motorist away from the hazard.

In addition, the MAX-Tension terminal utilizes standard guardrail components for significant savings in inventory and maintenance costs. Nuisance impacts during snow removal and maintenance operations can also be minimized due to the narrow design of the MAX-Tension Impact Head.



## Max-Tension Median End Treatment

### THE MASH TL-3 MEDIAN GATING END TERMINAL

The MASH tested MAX-Tension™ Median Terminal, with Sabertooth™ Technology, features the next level of impact performance. The system utilizes a tension-based design along with an energy absorbing coupler that features a cutting tooth design. When impacted head-on, deceleration is controlled by friction developed in the tension cables and by cutting the downstream guardrail panels. When a side impact occurs, tension cables can help safely redirect a motorist away from the hazard.

The MAX-Tension Median Terminal also utilizes standard guardrail components for significant savings in inventory and maintenance costs. In addition, a majority of smart-parts are interchangeable within the MAX-Tension family of end terminals to lower inventory costs even further.



## King Block™ Composite Offset Block

Used for guardrail panel installations using steel posts. It can be substituted for wood offset blocks on steel posts.



## Steel Guardrail Post

Galvanized Steel I-Beam Guardrail Post meets material specification ASTM A36.

## Wood Guardrail Posts & Offset Blocks

All wood posts comply with the requirements of AASHTO M-133 for wood preservation as well as meeting AASHTO M-168 for the physical and strength characteristics.

## Midwest Guardrail System (MGS) Systems / Components



## W-Beam Guardrail Panels

W-Beam Guardrail Panel, 12' 6" X 12 1/4", Class A 12 gauge, hot dip galvanized steel.

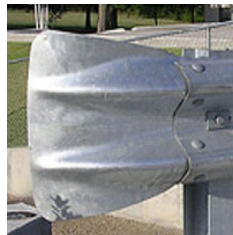
## W-Beam Guardrail Radius Panels

Guardrail Radius Panel, 12' 6" X 12 1/4", Class A 12 gauge, hot dip galvanized steel.

Rails are available either convex or concave to a radius of 5 feet to 150 feet as required. Terms convex or concave refer to the direction curved, outward or inward, relative to the traffic face of the rail.

## Guardrail Hardware

All hardware conforms to or exceeds the requirements of AASHTO M180/ASTM A307 with a minimum tensile strength of 60,000 psi. Hot-dip zinc coated in accordance with the requirements of AASHTO M232/ASTM A153.



## W-Beam Guardrail End Section

W-Beam Guardrail End Section, Class A 12 gauge, hot dip galvanized steel.



# Channelizers / Delineators



## FG 527 Guardrail Reflector Post

A 27" bright high profile marker with 36 square inches of High Intensity Prismatic (HIP) reflective sheeting. The 527 markers are effective at critical points along the roadway where vision can be partially restricted by hills, curves or vegetation.

## Butterfly Guardrail Reflector

Mounts inside W-beam rail, used for side mount delineation of guardrails. UV-stabilized polymers for long life in permanent installations.

## I-Flex Guardrail Marker

Fits over a steel I-beam guardrail post and also contains a built-in urethane hinge. The hinge allows the reflector to bend down and spring back into an upright position after impact.



## City Post

The City Post® may be Pexco's best innovation yet. Designed for quick replacement and superior durability, the 3-inch round channelizer post sets new standards for ease of maintenance and ultra-high durability.

Features a 1-piece construction with no mechanical springs to fail, 360° of visibility with factory applied reflective sheeting. Installs in concrete or asphalt. Easy "Spin-in" installation minimizes worker exposure.

City Posts meet MUTCD and NCHRP 350 requirements for channelizing devices. All impact testing was conducted independently by a certified facility: Texas A&M Transportation Institute (TTI).

## FG 300 Surface Mount Channelizers

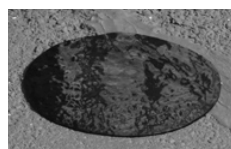
The FG 300 is offered in three grades: Model PE (15 vehicle impacts at 60 MPH) for general applications, Model UR (50 vehicle impact at 60 MPH) the industry workhorse, and Model EFX (60 vehicle impacts at 60 MPH) for your toughest installations. All three models are compatible with all six of our bases. FG 300 posts meet or exceed state specifications for surface mounted delineator posts, have been proven on the NTPEP Test Deck, and are compliant with NCHRP 350. No metal pins in bases to rust or seize – simple installation and replacement of damaged posts.

## FG 500 Roadside Delineator Posts

These drivable flexible guide posts for roadside delineation will not discolor when exposed to UV rays and will not rust, rot or splinter. They offer strength, flexibility and durability to stand up in the harshest weather conditions. Can be cut to any length and the single curve profile of the post provides maximum impact resistance and durability.



**CRAFCO**  
PRESERVATION PRODUCTS  
Delivering Confidence Through Innovation, Quality and Value Since 1978



## General Sealants Butyl Pads

Ultra high surface bond used in construction applications. Immediate seal. Very good elongation, high recovery and excellent flexibility. Excellent for expansion, contraction, vibration and joint movement.

## QwikDots™ Adhesive Pads

QwikDots™ are pressure sensitive peel and stick modified asphalt adhesive pads. Adhere sign posts, rumble strips, speed bumps, parking bumpers, temporary signs or almost anything else to concrete or asphalt pavement.



## Portable Cross Walk Sign

Portable Cross Walk Sign, STATE LAW YIELD TO PEDESTRIANS, Both Sides

# VISIT US ONLINE



**awpsafety.com**



# Pedestrian Crosswalk Solutions



## LED Enhanced Warning Systems



### RRFB Flashing Crosswalk Systems

Ideal for Pedestrian and School Zone crosswalks, LaneLight RRFB flashing crosswalk systems feature large 7" x 3" LED arrays that meet or exceed FHWA / MUTCD requirements for uncontrolled mid block crosswalk warning systems.

- XL LED arrays.
- Side of pole or Top of pole Solar models.
- Lithium-Iron (LI-Fe) batteries 10 year service life.
- 20W, 50, 85W plus Solar available.
- Wireless New High power Controller 2.4Mhz.
- 5 year warranty.



### LED Enhanced Signs

High visibility LED enhanced signs are designed to connect to a LaneLight flashing crosswalk system or can be used as stand-alone equipment in a variety of warning applications. Day or night LED enhanced signs have been shown to significantly improve driver response times in locations such as crosswalks, school zones, parks, playgrounds, shopping malls, and hospitals. Standard signs and custom sign options available.

- Can be seen over two miles away
- DG3 sheeting with graffiti film standard
- Any Warning or Regulatory sign or custom sign
- Solar or AC power option.
- Wireless connectivity option for systems
- Rugged construction
- 5 Year Warranty

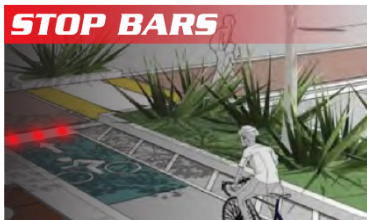


**Enhance Visibility  
Improve Driver Response**

### Bike Lane Systems

Maximize visibility, efficiency, and safety along your dedicated / protected bicycle lanes with a LaneLight in-road BikeSafe system which seamlessly integrates with your existing intersection controller. Bike lane stop bar systems are also available which reinforce the overhead signals to the cyclists who tend to be looking in a downward direction when they ride.

- Bicycle activated LED's.
- Traffic signal dependent function
- Alerts vehicles preparing to turn
- Dramatically enhanced visibility
- 5 year warranty



### In-Road Pedestrian Crosswalk Lights

LaneLights in-road flashing pedestrian crosswalk systems alerts the driver without adding roadside clutter and are very effective in applications such as mid-block crosswalks, roundabouts, and school zones. These in-road systems are engineered to survive in the toughest road conditions, are snow-plow safe, and come with a 5 year warranty.

- Flush Mounted in Roadway
- Brightest IRWL in the Industry
- Stainless steel fixture
- Snow-plowable
- Service life over 15 years
- Solar or AC versions
- 5 year warranty "Best in Industry."



### Hawk Hybrid Crosswalk Systems

Nothing compares to a LaneLight IRWL system when you target the tunnel vision of a Distracted Driver. Maximize the visibility of your HAWK crosswalk systems with a dual color LaneLight In Road Warning Light system. Seamless traffic controller integration.

- New Lane Light Controller significantly reduces cost.
- No need for large Traffic cabinet or 2070 controller.
- Great for Mid-block crosswalks.
- Save thousands over conventional Hawk systems.
- Easy to install on straight poles or mast arms.
- Countdown timers display 24/7.
- AC & Solar configurations available.
- 5 Year Warranty.



### Curve Delineation Systems

Featuring daytime-visible LEDs, sealed electronics, boron lenses and stainless steel lighthoods, LaneLight in-road markers are durable, low maintenance, and the ideal solution for high visibility delineation applications at dangerous curves, turn lanes, onramps, and freeway exits.





# Radar Speed Feedback Signs



## Solar Powered Radar Speed Signs

LED display with directional beam technology delivers a superior quality display for drivers, even in bright sunlight. Radarsign's proprietary design serves as a cone, magnifying the intensity of the light, and pinpoints it directly to the view of approaching drivers. NEMA 4R level compliant; meets or exceeds MUTCD design guidelines; Makrolon® polycarbonate cover provides maximum UV protection and is abrasion, shatter, and graffiti resistant.



Standard Alerts



Optional Alerts

## TC-600 Full Matrix Radar Speed Signs: AC and Solar Power Models

The TC-600 full matrix radar speed sign is available in AC and solar power models. The TC-600 speed display is easily readable up to 600 feet away, and is ideal for roads with traffic speeds of 5-70 mph.

**YOUR SPEED Faceplate:** 28"W x 33"H YOUR SPEED faceplate with 4" high lettering. MUTCD compliant colors and reflectivity. Ideal for roads with traffic speeds of 5-70 mph. Available in white, fluorescent yellow/green, or safety orange.

**Standard Speed Violator Alerts include:** slow flash of actual speed, fast flash of actual speed, SLOW DOWN message, or TOO FAST message; Can be combined in multiple ways.

**Optional Speed Violator Alert choices:** SHARP CURVE, Chevrons (right or left facing), Smiley face, Fine alert, Red/blue strobe (alternating), Simulated camera flash and white strobe, Display speed and word message alerts alternately or individually, based on speed settings, Display on-off feature allows traffic data collection continue even when the display is off (stealth mode).

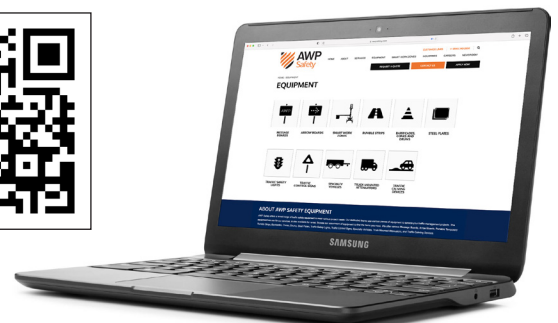


## BriteSide® Reflective Panels

When safety is an issue – particularly in high incidence areas – the need for highly visible signs is a necessity. With BriteSide Reflective Panels, visibility is increased dramatically, day or night, rain or shine, making the roads safer for motorists and pedestrians. Satisfies MUTCD requirements.

**FEATURES:** Higher day/night visibility, Vertical reflectivity leads eye to sign, Theft-resistant fasteners, Mounts in seconds, No sharp edges, Non-corrosive, Available in 2 grades of 3M™ Reflective Sheeting

## VISIT US ONLINE



**awpsafety.com**



# Breakaway Posts and Hardware



## Break-Safe® Omni-Directional Breakaway System

Transpo's Break-Safe® is a breakaway support system for ground mounted signs located within roadside clear zones or other locations vulnerable to vehicular impacts. The omni-directional system is designed to break away quickly and cleanly upon impact, thus saving lives and reducing property damage costs.

All Break-Safe® models are FHWA approved for use on the National Highway System (NHS) and Federal-Aid projects.

*Call for specific sizes and configurations.*

## Pole-Safe® Omni-Directional Breakaway System

Transpo's Pole-Safe® Omni-Directional Breakaway Support System features couplings designed to be used on poles located within roadside clear zones and other locations vulnerable to impacts. The primary component of the system is a high-strength coupling, engineered to break away quickly and cleanly upon impact. The poles break in a consistent, predictable fashion, regardless of the vehicle's angle of impact, thus saving lives and reducing property damage.

*Call for specific sizes and configurations.*



## Sign Posts & Hardware

We have it all including wood, square, round and U-channel post, strapping, braces, post caps brackets, aluminum and street sign blanks.



## Telespar® Temporary Sign Skids

Reusable, Adjustable & Easy to Assemble. Nobody likes construction delays, the sooner the job is completed, the better it is for everyone. Telespar temporary sign skids can help you get the job done quicker. This easy to assemble, simple to maneuver system, enables you to set up and reposition your signage quickly, allowing more time for performing the task at hand.

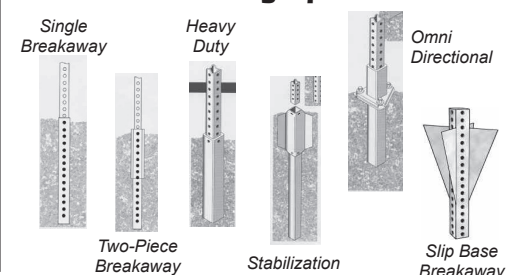
- No need to drive posts into the ground
- Crash worthy
- Detachable leg allows compact stacking
- Reusable
- Repositionable as construction site moves
- Available in single or double post
- Adjustable feet adapt to differences in terrain for stability
- Telescopic for varied sign heights
- Available in pre-assembled kits and easy to assemble pre-manufactured components
- FHWA & NCHRP 350 Approved



## Telespar® Sign Support Systems

The Telespar system is available with three types of posts: galvanized steel tubing with perforated holes on all four sides, Qwik-Punch® posts, which are made with 7/16" knockouts, 1' on the center on all four sides and the round sign system with socket and wedge. The tubing is produced through a unique manufacturing process that permits tubular sections of different sizes to telescope into the next larger size. It is complemented by a variety of compatible fittings accessories, nuts, bolts and simple installation tools.

## Anchoring Options



## Square and Round Slip Bases

The Square and Round Slip Base Breakaway sign support systems are designed to facilitate easier installation and maintenance, and to help minimize damage upon vehicle impact within NCHRP Report 350 crash test standards. The system is tested to NCHRP Report 350 and designed to AASHTO guidelines.

In the event of an impact within NCHRP Report 350 crash test standards, the system retaining plate is designed to shear allowing the post and casting to release from the post base. Repairs can be as easy as replacing the retaining plate and resetting the bolts holding the casting to the anchor.



# Pavement Marking / Grinding Equipment



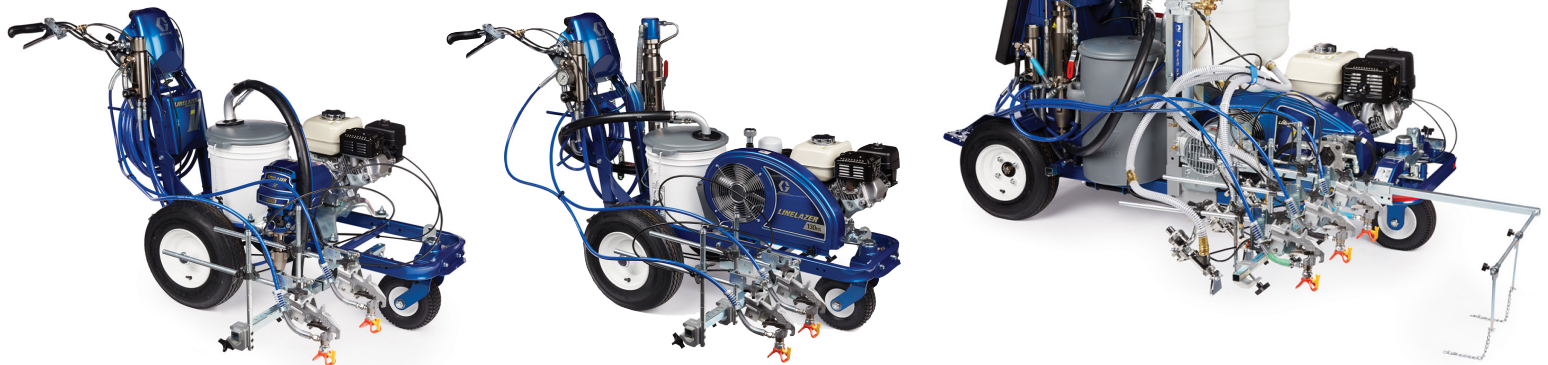
LineLaser V 3900 with the LineDriver



## Graco LineLaser Line Stripers

Professional striping contractors prefer Graco line strippers to deliver the highest quality and unmatched performance on airports, parking lots, road construction zones and more. From small walk behind strippers to large truck mounted systems, there is a Graco line stripper to meet your needs.

- **PROVEN QUALITY** - Each LineLaser stripper boasts Graco quality and dependability that you can count on. For more than 25 years striping contractors have turned to Graco.
- **MAXIMUM PERFORMANCE** - Each LineLaser System is engineered to deliver maximum performance for completing jobs quickly and efficiently.
- **UNMATCHED PRODUCTIVITY** - Superior design and innovative technology means you'll be getting the highest productivity in a line striping system.



## Graco ThermoLaser Systems

Graco ThermoLaser thermoplastic line striping solutions withstand the harshest conditions to provide years of productive, profitable use. Whether you have an existing premelt kettle system or require premelting capability, each ThermoLaser delivers high productivity without the large investment.

- 100% factory-tested and field-proven design, coupled with cutting-edge technology, keep Graco systems performing on the job for years.
- Higher output with superior control ensures the highest quality finish for every job.
- Backed by our full warranty coverage and more than 85 years of proven commitment to the professional contractor.

## ThermoLaser SmartDie II

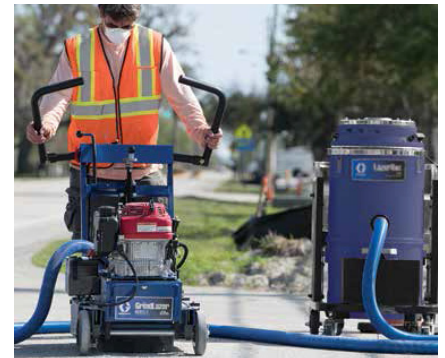
It's innovative design allows users to use it with or without direct heat allowing more flexibility in all weather conditions. The unique "floating" die design allows the die to float with the constantly changing surfaces allowing the best possible line to be put down—every time. The no-tool die change out system makes it fast and simple to change out your dies when switching between different width lines commonly found in intersection jobs.



## Graco GrindLazers

Graco's GrindLazer equipment provides a complete set of solutions for surface preparation scarifier applications so you get the job done right - in less time and with less effort.

- **Easy-to-use DialDown Depth Control System** provides precise cutting depth
- **Vibration Reduction Technology** provides up to 4X less vibration than the competition
- **InstaCut Technology** provides ultimate flexibility and allows deck to "float" on uneven surfaces



## Graco GrindLazer Drum Applications

11 Drum Cutter options include Wire Brush, Steel Star, Steel Beam, Carbide Flail, Carbide Flat, Carbide-Tipped Miller, Full Carbide Miller, Carbide Pick, Diamond Blade, PCD Flat and PCD Round.

- Grooving — preparing surface for paint or thermoplastic
- Removal of paint and thermoplastic
- Surface leveling — taking down high spots (trip hazards)
- Inlay — thermoplastic and tape



## LineLaser RAC 5 SwitchTips & Tip Guards

- Creates clean, laser-sharp lines with no fuzzy edges or thin spots
- Designed specifically for parking lots, roads, warehouse floors, crosswalks and athletic fields
- Ensures consistent paint thickness, from edge to edge, less overspray and long-lasting lines





# Line Marking / Blasting / Sanitizing

## Graco LineDriver

Why Walk When You Can Ride? Graco offers two high performance LineDriver attachments that connect to your LineLazer, ThermoLazer or GrindLazer to double your pavement marking and maintenance productivity.

- Exclusive FlexBeam Break-A-Way Light System
- Patented Dual Foot Pedal System
- Exclusive ProStart™ Engine Starting System
- Dependable Honda Engine



## Graco FieldLazer Systems

Most competitive low-pressure field markers flood the grass and soil with paint. Graco's high-pressure pumps and precision spray tips provide higher quality lines, arcs and circles by applying a fine spray pattern which coats both sides of the grass blade, not the soil. This results in brighter lines, finishing fields 4x faster and using up to 50% less paint. Graco high-pressure, airless grass strippers use gas, electric, or battery power to tackle any field marking application – from small sport clubs to the biggest professional teams.



**RENTALS  
AVAILABLE**

## Graco EcoQuip 2 Abrasive Blasters

Graco abrasive blasters are ideal for blasting in areas where dust and containment are concerns. Wet and vapor abrasive blast systems employ a mixture of water, air, and abrasive to clean and remove surface contaminants and coatings. This method is ideal for surface preparation and provides a cleaner surface with little to no embedded particles or clinging dust.

- Graco's abrasive blasters will eliminate up to 92% of airborne dust compared to dry sand blasting.
- With substantially less dust in your work environment, you'll spend more time working and less time cleaning up at the end of your workday.

## KoldSpray MMA 982WB Walk Behind Line Stripper

The KoldSpray MMA 982WB walk-behind line stripper is designed to spray methyl methacrylate pavement marking materials at a fixed ratio of 98 parts resin to 2 parts of catalyst. DTC's robust patent pending HydraSync and TriRod pump technology which provides accurate and reliable proportioning of the catalyst at a 2% ratio by weight. 4-liter stainless steel catalyst and solvent tanks are standard. Resin is dispensed from the factory 5-gallon material container or an optional 15-gallon container. Gravity flow or pressurized bead systems with air compressor are available as options.



## Graco SaniSpray HP Disinfectant Sprayers

The industry's first airless high production equipment built specifically for your sanitizing, disinfecting and deodorizing jobs.

Graco's SaniSpray HP products have been designed to deliver consistent coverage, without heavy drips and runs, so that you can achieve specified disinfectant dwell times.

Don't leave your success to chance. Graco SaniSpray solutions include innovative, patented technologies to deliver highest productivity on all your cleaning jobs, small or large. Multiple options to choose from.



## Graco EcoQuip 2 Blast Hoses & Nozzles

Graco now offers various hose and nozzle choices to fit the wide range of blasting applications in commercial and industrial markets. Graco blast hoses can reduce fatigue and improve jobsite efficiencies while withstanding rugged blasting environments. Brass fittings are designed to last longer than plastic and are used on both standard and elite units and are also grounded for ATEX marked equipment. Graco Nozzles have an easy-grip knurl on the outside and a silicon carbide blend insert for long life. Branded blue for Graco means exceptional wear resistance and performance you can depend on.



# Thermoplastic / Specialty Markings



## 360MII Thermoplastic Applicator

With existing Trantex innovations like heavy weight STEEL dies, no die springs, removable tanks for color change, and direct drive bead dispense, the NEW 360MII has over twenty new additional innovative refinements and improvements that will further improve performance, enhance safety, and reduce manpower requirements. Our proven and precise all steel extrusion dies do remain unchanged and continue to offer full adjustability, producing razor sharp lines. Dies available in 4", 6", 8", 10", 12" and 6"x3"x6".



## Thermoplastic Premelter

Our thermoplastic melter is an all-new product for those requiring a smaller packaged thermoplastic melter. A great economic value. Available in a 720 lb. capacity in both single and dual tank configurations.

## TT Series Thermoplastic Premelter

The TT Series Thermoplastic Melter offers the ability to adapt to any transport option needed. 20' Power cords, LP hoses and hydraulic hoses allow LP bottles, power-pack, and premelter to be mounted independently for added safety and versatility. Available in a 1000 lb. capacity in both single and dual tank configurations.



## Trailer Mount Thermoplastic Premelter

TP1500 Thermoplastic Melter is the heavy-duty contractor solution capable of supplying multiple thermoplastic applicators. TP1500 Packages are available for truck mount OR trailer mount complete with a 360M handliner and storage area for pallet(s) of thermoplastic. The burner system is controlled by a solid state, electronic thermostat. The TP1500's combination of reduced heat-up time, the numerous safety features, and Trantex high quality ensures operators are safe and have high production capability for many years.

## Bitumen Applicator – Crack Filler

The Model 50150 is an economical solution for marker application and/or crack fill. At just under 90 lbs, the 50150 is very portable and easy to maneuver. Unit rides on two soft full rubber tires on the front and two swivel casters on rear. 65lb (30kg) capacity. An optional marker storage may be added.

## Bitumen Applicator – RBM300

The RBM300 is a self-contained, walk behind, bituminous applicator that enables the operator the ability to add a self-propelled device for even more production speeds and/or handle the more challenging applications like hilly terrain and heavier loads. The RBM300 with the optional Line Driver is the only one-man operation, auto-propelled bitumen applicator. 300 lb (136kg) capacity.

## Line Remover 20HD

Features a rotary design that delivers faster removal rates while eliminating the continuous scarring associated with drum style line removers. The unique design of the 20HD enables wider single pass coverage allowing the operator to instantly range from 4" to 24" widths for maximum removal volume per pass. This same flexibility pinpoint the 20HD to the precise removal area without having to change drums or cutters, saving you time and money. Available in standard 20HD, 20HDEFF (Fine Finish) or 20HDEFF (Extra Fine Finish).



## Color-Safe® Pavement Markings

Transpo's Color-Safe® MMA marking material is not only one of the most durable markings on the market, but it can be applied in cold weather extending the marking season. Due to their high durability and color stability, MMA road markings cost less in maintenance and material costs over the extended lifecycle of the markings. You can enhance the conspicuity of the markings by adding glass beads to the Color-Safe surface. Color-Safe® conforms to FAA regulations for taxiway and runway markings: AC 150/5370-10F - Standards for Specifying Construction of Airport.

## High Friction Surface Treatments

High friction surface treatments significantly increase surface friction reducing run off the road accidents on hazardous curves. Transpo offers two binders for HFST. Transpo's T-28 HFST Methyl Methacrylate (MMA) is a Methyl Methacrylate resin binder and Transpo's T-526 HFST is a two-component epoxy resin based binder. Both are capable of rapid cure on concrete and asphalt surfaces, can be applied on both asphalt and concrete pavements and can be applied manually or with automated equipment. When incorporated with broadcast aggregate this system adds increased skid resistance that can greatly reduce accident and fatality rates on hazardous roadways.





# Striping Paint / Glass Bead



## Line-PRO™ 1000 Series Parking Lot, Athletic Field, & Dirt Resistant Striping and Curb Marking Paint

Line-PRO 1000 series comes in a variety of products that include Standard Dry Parking Lot Paint, Zero-VOC Athletic Field Paint, as well as Fire Lane Red, ADA Blue, and Limited Parking Green Curb Paint. Line-PRO 1000 products are durable and extremely UV resistant, providing years of service without color fade.

## Line-PRO™ 2000 Series Fast Dry Airport Runway Striping & Marking Paint

Durable and fast drying, Line-PRO 2000 is the premier product for Airport Runway striping and marking. Line-PRO 2000 is formulated specifically to meet Federal Specification TT-P-1952F, Type I/II, which allows its use on most federally funded projects.

## Line-PRO™ 3000 Series Fast Dry State Specification Traffic Paint

Line-PRO 3000 meets California's Department of Transportation (CALTRANS) PTWB-01 R2 requirements for pavement delineation on highway construction and maintenance projects. Line-PRO 3000 is a 100% acrylic, fast-drying, waterborne traffic paint that contains no heavy metals and has field proven durability.

## Line-PRO™ 4000 Series Low Temperature Solvent-based Striping & Marking Paint

Line-PRO 4000 is a series of solvent-based traffic paints which have been formulated for striping and marking in temperatures as low as 0 °F. Both Low VOC and High VOC formulations are available. Colors include White, Yellow, Black, Fire Lane Red, ADA Blue, and Limited Parking Green.

## Line-PRO™ 6000 Series Rapid Dry Premium Performance Striping & Marking Paint

Line-PRO 6000 is a proprietary formulation that will meet or exceed the performance of state and federal specification traffic paints. Formulated with carefully selected raw materials, Line-PRO 6000 is a fast drying, long lasting traffic marking that has proven to withstand harsh weather and heavy traffic road conditions.

## Line-PRO™ 7000 Series Stencil Guard & Temporary Striping & Marking Paint

Line-PRO 7000 is a Series of products ranging from Stencil Guard to Temporary Construction Zone Paint. Line-PRO 7001 Stencil Guard provides an easier cleanup of aluminum, wood, or plastic stencils. Line-PRO 7010 is a temporary traffic marking paint that allows quick lane delineation changes.



## Thermoplastic Pavement Marking Compounds

Thermoplastic Pavement Marking Compounds have been used extensively in the road marking industry since the 1950's as a durable and economical pavement marking on the world's highways. Available as powder or in preformed blocks.

## Intersection Grade Thermoplastic

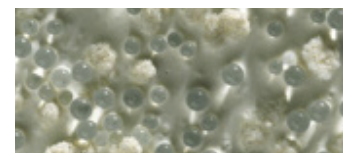
Designed to provide a consistent application of a skid resistant marking, while providing retro-reflectivity throughout the entire marking. Used on crosswalks, turn arrows and bike legends, stop bars, or anywhere else pedestrians, motorcyclists, or cyclists could be injured.

## Preformed Thermoplastic

Made with SWARCO'S brilliant glass beads which are distributed throughout the material during the manufacturing process. As the material wears down additional glass beads are exposed thus ensuring exceptional retroreflectivity during the life of the preformed thermoplastic pavement marking.

## Pavement Marking Reflective Glass Beads

Embedding glass beads into highway safety markings creates reflective lines that shine through darkness, rain, and fog to direct drivers more safely along the road while reducing drying time and subsequent tracking, and increasing the effective life of the line up to 50% because the bead surface resists traffic abrasion.



## Stencils

Polyvinyl stencils will withstand heavy use. Designed to meet D.O.T. specs nationwide. Apply paint with brush, roller or spray equipment. When paint dries, it simply flakes off. Unlike wood, aluminum or other stencils, our stencils will not break, bend, crease, warp or load up with paint.



**NO PARKING**

**A B C D E F G H I**





# Temporary / Permanent Road Markers



## 3M™ Raised Pavement Markers

Durable, lightweight thermoplastic markers that provide highly effective, long-life visibility particularly at night and in wet weather. Markers may be applied to asphalt and concrete road surfaces in non-snowplow regions. The markers are impact resistant and increase awareness with an added rumble effect.



## 3M™ Stamark™ Pavement Marking Tape Series 270 ES

3M™ Stamark™ Pavement Marking Tape Series 270 ES are durable, patterned tapes with a polyurethane top coat for long-term retained whiteness and a reinforcing net in the adhesive layer to minimize shear and tearing in the intersection environment.



## 3M™ Stamark™ Wet Reflective Removable Tape

Conformable, removable pavement marking tape intended for longitudinal line applications in construction work zones where removability is required.



## Rayolite® Round Shoulder Longlife RPM

A standard-type reflective pavement marker designed to offer maximum strength, high reflectivity and lower tire impact. For permanent and temporary use.



## ATM 200 Removable Construction Tape

Recommended for construction projects up to one year. Offers excellent daytime visibility for delineation and superior nighttime reflectivity.

## ATM 280 Removable Hide-A-Line Tape

Installs quickly and easily over existing markings and eliminates costly removal of permanent road markings. The non-reflective, matte black color blends with asphalt surfaces providing an effective mask day or night.



## Swarco Visa-Line

Economical solution when short-term temporary marking tapes are needed for construction or road repair areas. Designed to provide reflective delineation to roads during asphalt overlay or new road construction. Not only can Visa-Line be left in tact but it can be removed with heat or simply paved over when your project is completed.



## Arex 4" Round Non-Reflective RPM

Manufactured per ASTM specifications. The bottom of these markers are configured to produce an excellent structural bond with the pavement, while their strong yet lightweight construction allows for easy installation. For permanent and temporary use.



## Pexco RPMs & Halftracks

RPMs and Halftracks are long-term temporary road markers designed for use on both low volume roads and interstate highways.

## Pexco TRPM Chip Seal Markers

TRPM chip seal markers hold the original lane line location in chip, slurry or fog seal road maintenance operations. TRPMs are durable enough for use on both low volume and interstate highways.

## Pexco Temporary Overlay Markers (TOM)

TOMs are a most effective and convenient product that provides short-term pavement markings that work effectively both day and night. They are simple to place and easy to remove. They are durable enough for use on any road, from low volume to interstate highways.



## Pexco Road Marker Epoxy

Our rapid setting two-part gray road marker epoxy is the most reliable permanent adhesion product available. Typical applications include City Post anchor cups, channelizer posts, permanent installation of rumble strips and curb sections.

## Adhesive Pads

Specifically designed to adhere Raised Pavement Markers (RPMs) to the road surface. Easy removal without damage to the road surface makes these ideal for use in work zones. Simply heat the pad and push a shovel underneath the RPM to lift it.



## FIRMmarker™ Two Part Epoxy

Meets ASHTO M237 specifications. Specifically designed for the bonding of traffic markers and indicators as well as safety posts.

## FIRMmarker™ Cartridge Two Part Epoxy

20oz. Cartridge w/quick release mixing applicator that dispenses and mixes exactly what you need. Steel Caulking Gun applies parts A&B epoxy at a ratio of 1:1 for a total of 20oz. or 600ml. Unused product can be stored for future use.





# Asphalt Maintenance Products

**DEERY**  
PAVEMENT PRESERVATION PRODUCTS

**CRAFCO**  
PRESERVATION PRODUCTS  
Delivering Confidence Through Innovation, Quality and Value Since 1976



## Hot-Applied Bituminous Marker Adhesive

Bonds markers and reflectors to both asphalt and concrete pavement surfaces. The adhesive is supplied as an easy to use single component material which is easily melted and poured or pumped onto pavement surfaces.

## QwikStix™ Adhesive/Sealant

The Crafc QwikStix is a fast and easy way to adhere pavement markers or do small scale crack filling or sealing repairs. The only tool required is a small torch. Peel back the self release cardboard box and melt just enough to do the job.



## SET® Epoxy Adhesive

A high-strength, non-shrink, epoxy-based adhesive formulated for anchoring and doweling threaded rod and rebar.

## ET-HP® Epoxy Adhesive

ET-HP® is a two-component, high-solids, epoxy-based system for use as a high-strength, non-shrink anchor-grouting material.

## EDT22S Manual Dispensing Tool

Features a steel carriage and is engineered for high-volume, continuous use. Can be easily converted (conversion parts included) from dispensing a 22 oz. 1:1 ratio cartridge to a 16.5 oz. 2:1 ratio cartridge.

## Titen HD® Heavy-Duty Screw Anchor

The Titen HD screw anchor is for use in cracked and uncracked concrete and masonry. For use in severe environments where exposure to the elements and corrosion is a concern.

**DEERY**  
PAVEMENT PRESERVATION PRODUCTS

**CRAFCO**  
PRESERVATION PRODUCTS  
Delivering Confidence Through Innovation, Quality and Value Since 1976



## DEERY Hot Applied Sealant

A moderately high viscosity pavement preservation sealant intended for highway, street and aviation applications for sealing longitudinal and transverse joints and random cracks in Asphalt or Concrete pavements where use of high levels of recycled material is desirable.



## DEERY 180 Hot Applied Sealant

For regions with moderate high and low pavement temperatures; moderate viscosity; high levels of recycled material. Exceeds requirements of ASTM D5078.

## DEERY 200 Hot Applied Sealant

For regions with high and moderate low pavement temperatures; moderately high viscosity; high levels of recycled material.



## DEERY PLF210 Hot Applied Sealant

For regions with moderate high and moderate low pavement temperatures; moderate viscosity; fast setup sealant.

## DEERY 220 Hot Applied Sealant

For regions with high and moderate pavement temperatures; moderately high viscosity; high levels of recycled material.



**AQUAPHALT**

## Aquaphalt Cold Mix Repair

Revolutionary permanent asphalt and concrete repair material for pothole repair, pavement repair, utility cuts, walkways, tennis courts and driveway repair — it works even in wet and cold conditions. Aquaphalt is the first pre-mixed, permanent repair material that is enduring, high-performing and 100% environmentally friendly. Aquaphalt's proprietary "green" binder reacts and hardens with solely water. can be laid directly from its container, so no repeat repairs or overhead costs are required.





# Parking Lot Products



## Easy Rider® Speed Bump

Constructed from 100% recycled tires, Checkers speed bumps are preformed to implement immediate installation. Molded highly reflective tape ensures that the speed bumps are visible even on a dark night. Cat's eye reflectors further enhance visibility to alert drivers well in advance. The bumps have a channeled bottom to facilitate drainage as well as to cover cabling or piping. Resistant to ultraviolet light, moisture, oil, and extreme temperatures. Temporary or permanent installation - Relocatable when resurfacing / maintaining road surfaces; products can be stored and re-used. Checkers rubber speed bumps are covered by a 3 year warranty; 1 year on the tape (under normal use).



## Safety Rider® Mini Hump

Mini speed humps are ideal for slowing traffic in school parking lots and crossings, playground areas, hospitals, parking facilities, and anywhere a slow traffic flow is required. Molded highly reflective tape provides optimal visibility even on a dark night, alerting drivers well in advance. Constructed from 100% recycled tires, mini humps are simple to install and do not require road closures. Plastic shields are inserted into pre-drilled holes and the units are bolted down to keep from shifting. The Safety Rider® can be easily removed for storage or relocation. Safety Rider® mini humps are covered by a 3 year warranty; 1 year on the tape (under normal use).



## Park It® Parking Curb

Unlike concrete or plastic, which necessitate frequent replacements, recycled rubber car stops are safer and more durable. In-molded highway reflective tape ensures visibility and pedestrian safety. The Checkers Park-It® parking curb is constructed of 100% recycled rubber and are lightweight (34 lbs. for a 6' car stop) and flexible; conforming to the contour of uneven road surfaces. Resistant to ultraviolet light, moisture, oil, and extreme temperatures. Temporary or permanent installation. Park-It® car stops are covered by a 3 year warranty; 1 year on the tape (under normal use).



## Home Park It® Parking Curb

The Home Park It® is used to provide guidance to cars while parking as well as to protect the front of your vehicle. It provides worry free parking for garages, driveways, or carports.



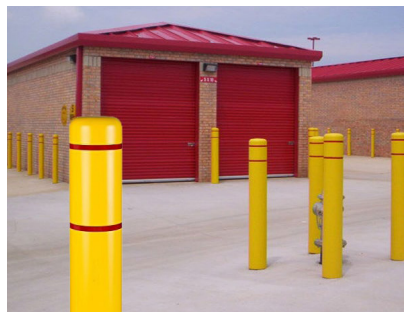
## Corner & Wall Guards

These corner and wall protectors are long lasting, durable, and cost-effective solutions. High intensity reflective tape increases visibility - especially at night, and provides the necessary guidance to drivers when parking in tight spots.



## Concrete Parking Bumpers

Used in a variety of site structures including parking lots, walkways, curbs, gutters, dumpster pads, parking bumpers, catch basins, walls and ramps. Available in 6'-8' 1/2 round, hexagon and truck bumper styles.



## Plasticade® Bollard Covers

Attractive domed top and smooth sleeve surface 1/8" thick plastic bollard covers, fit 4" and 6" posts. Installs in minutes - no adhesives, screws, or tools required. Place provided compressible foam strips on bollard, then slide on cover. Optional two strips of 3/4" reflective tape increase bollard visibility, tape is recessed to keep it scratch free. Engineered plastic resists fading and withstands severe weather. 5 year warranty against fading. Made in the U.S.A.



## Surface Applied & Cast in Place Truncated Dome Detectable Warning Mat

Surfaced Applied Tactile is made of a colorfast and UV stable homogenous glass and carbon composite with fiberglass truncated domes for enhanced durability. The Surface Applied Tactile is used to retrofit over an existing concrete substrate and can be installed in as little as 10 minutes. The Cast in Place Tactile is used for use in new curb ramps or new construction. Just pressed into place in freshly poured concrete, it's a great long-term solution for any project, under any weather conditions.

All of our truncated dome tactile surfaces are in full compliance with the American Disabilities Act Accessibility Guidelines (ADAAG), Public Right-of-Way (PROW) and Title 24 Requirements. Approved for use by all major municipalities, DPW's and state DOT's.



# Temporary Marking / Layout Products



## Stripping Paint - Solvent Based

Solvent-based stripping paint. Fast drying - 5 minutes to touch, durable, long-lasting stripe, high-visibility colors, VOC compliant and lead-free, non-clogging spray tip. Excellent resistance to traffic, oil and gasoline. Not recommended for turf surfaces.

## Survey Marking Paint

A superior upside down marking paint with excellent visibility and durability. Regular and fluorescent colors are visible for up to 6 months depending on traffic and exposure. Fluorescent colors last 3 to 6 months.

## All Purpose Marking Paint

This multipurpose purpose marking paint provides a very cost-effective approach to marking with good visibility. Spray on any surface. Self-cleaning tip. Mark lasts 2 months.

## Aervoe Marking Chalk

A blend of raw materials that are safe on all surfaces for temporary marking. Mark will disappear in 10 to 20 days when exposed to water, traffic and other abrasions. It can also be removed with a pressure washer. Safe for turf surfaces.



## Marking Stick

A hand held, rolling inverted marking paint applicator. Includes a flag holder and flag insert spike. Simply remove the wheel and insert the spike for quick flag placement.

## Stripping Stick

For stenciling and touch-up striped lines. Approximately 36" long. Use with Aervoe Stripping Paints only.

## Vers-A-Striper® - Pavement

A lightweight, yet heavy-duty aerosol stripping paint applicator for use on hard surfaces such as asphalt and concrete. Stripe widths up to 4". Includes a stripping alignment guide and radius wheel for making smooth arcs.



MAKE YOUR MARK

## MP Series Measuring Wheel

Durable enough to stand up to the harshest field conditions. Features the industry's best counters with the best counter protection. Huge numbers make for easy reading. Rugged 3/4 inch steel frame: tough enough to handle any terrain. Compact fold-down: easily folds in half for storage and portability.



## RoadRunner Indoor/Short Run Measuring Wheel

Smaller 1-foot wheels typically used in short run and indoor applications. It's easy to measure curved, horizontal and asymmetrical surfaces. Features a handle that telescopes from 17 inches (fits into a toolbox or briefcase) up to 38 inches and a 5-digit, easy-read, magnified counter that measures 9,999 feet, 11 inches without resetting.

## Top Reading Center-Line Measuring Wheel

These innovative wheels feature a gear shaft driven counter placed above the wheel. This results in better balanced wheels. Features enhanced grip pistol-type handle, re-set on the handle AND on the unit housing, brake on pistol grip, center-line handle design with counter on top of wheel, flip-down kickstand, gear & shaft transmission for highest measurement accuracy and strength, and compact fold-down — easily reduces to 1/2 its size for storage and portability.



## Dixon Railroad Chalk

For temporary markings on metal, wood, stone, and paperboard since 1835. This smooth marking chalk is ideal for bright temporary marks.

## Half-Moon Marking Chalk

Used on rail cars, concrete, asphalt, wood and other surfaces, this chalk is ideal for layout work and marking for estimating.

## Giant® Chalk Line Reels

Our GIANT® brand is big — so it can hold a lot of string and a lot of chalk. If you're snapping dozens of lines, or need big bold lines, grab a GIANT® and make your mark. ABS housing and metal handle.

**G150 FEATURES:** 150 feet heavy-duty cord and pull ring. Holds over a pound of chalk for fewer refills. One-piece steel crank for long life.

**G100 FEATURES:** 100 feet heavy-duty cord and pull ring. Hooks easily onto tool belt and holds almost a pound of chalk. One-piece steel crank for long life.

## ProChalk® Standard

For your basic chalk line needs that are easier to clean up or let wear away naturally.

## ProChalk® Semi-Permanent

For weather- and water-resistant lines that hit and stick for a long time but will eventually wear away naturally.

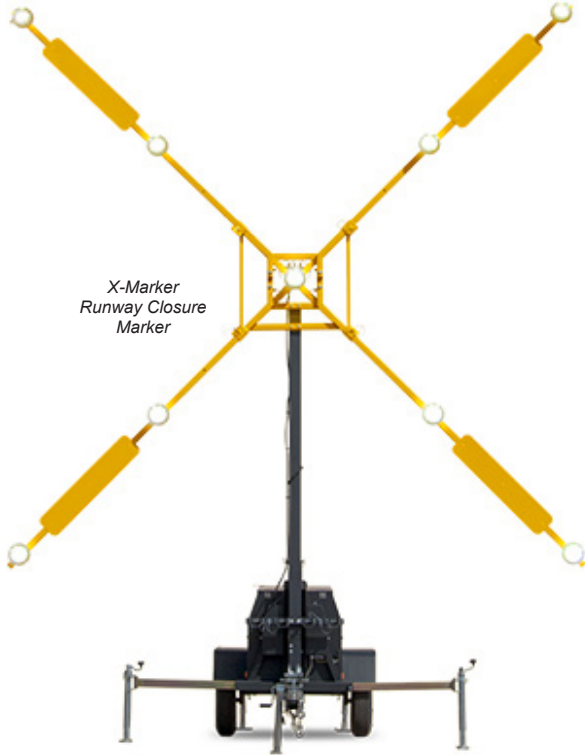


MAKE YOUR MARK





# Traffic Control Equipment



X-Marker  
Runway Closure  
Marker

## X-Marker™ L-893(L) Runway Closure Marker

The Wanaco X-Marker™ Runway Closure Marker is a lighted visual aid for indicating to airplane pilots that an airport runway is closed. Designed to exceed FAA requirements, its flashing lights can be seen both day and night from miles away, clearly discernible as a giant "X" and distinguishable from other lighted visual devices used at airports, signifying that the runway is not open for landings. The X-Marker trailer is easy to transport and can be deployed by one person in less than five minutes.

## Full-Matrix Message Signs

Full-size, full-matrix Wanaco Variable Message Signs are the ideal choice when you need to get information to the public. The full matrix allows the greatest flexibility for displaying any type of message — large or small letters, graphics and symbols. Perfect for a wide variety of applications, a multitude of functions and options make these signs extremely versatile. 138" x 75".

## Mini Matrix Message Signs

The Wanaco Mini Matrix Message Sign is a compact version of our full-size variable message signs. Like our full-size signs, the Mini displays a full-matrix of bright, highly visible LEDs. About 30% smaller, the Mini trailer is highly maneuverable and easy to deploy. Use the full-matrix display to present message text and symbols in almost any application — for traffic safety, emergency response, and special events. 96" x 55".

## Three-Line Message Signs

The Wanaco Three-Line Message Sign is capable of displaying three rows of alphanumeric characters. When you need to get information to the public, the Three-Line's highly legible, ultra-bright LEDs display your message clearly. Unsurpassed quality, engineering and value, paired with a multitude of functions and options, make this sign perfect for a wide variety of applications. 138" x 75".



Full-Matrix Message  
Boards



Metro VMS  
Message Board



Mini Three-Line  
Message Board



Truck Mount Matrix  
Message Board



## Mini Three-Line Message Signs

The Wanaco Mini Three-Line Message Sign is a compact version of our full-size Three-Line Sign. About 30% smaller, the Mini is highly maneuverable and easy to deploy. Capable of displaying three rows of alphanumeric characters, when you need to get information to the public, the Three-Line's highly legible, ultra-bright LEDs display your message clearly. 96" x 55".

## Metro VMS

Metro Variable Message Signs are our most compact portable signs, designed for use in metropolitan areas where space is limited. The Metro VMS features a full matrix of high-efficiency LEDs for outstanding legibility with reduced energy consumption and superior performance. Available sizes include 71" x 48" (shown) and 96" x 48".

## Truck-Mount Matrix Message Board

Full matrix display, 10" default font, variable font sizes, preprogrammed bold arrows. Integrated power-tilt frame with electric actuator. Full-color touchscreen controller with continuous message preview. Available sizes include 73" x 49" (shown) and 73" x 36".



# Traffic Control Equipment



**RENTALS  
AVAILABLE**



## W|ECO® Folding-Frame Arrow Boards

Wanaco® Arrow Boards are portable and self-powered, requiring no permanent installation or wiring. Arrows and other patterns are selected by the user.

Wanaco Folding Arrow Board Trailers feature a display panel that pivots up to the vertical position when deployed, and down to the horizontal position for transport. The display is held in place with a single support for ease of use.

Wanaco Trailer-Mounted Arrow Boards feature W|ECO® technology, a highly efficient power system. With Wanaco's exclusive LED lamps and small, eco-friendly batteries, W|ECO Arrow Boards are extremely energy-efficient without sacrificing performance. Power is provided by batteries, which are charged by an automated solar charging system. With sufficient sunlight, W|ECO Arrow Boards can run indefinitely without intervention. 96" x 48".

## Wanaco Vehicle Mounted Arrow Boards

Arrow Boards direct traffic by flashing a brightly lit arrow pattern on a large, highly visible display panel. Wanaco® Truck-Mount Arrow Boards provide an obvious solution for convoys, crash-cushion (TMA) trucks and emergency repair crews. Installed over the cab or in a truck bed, power is provided by the truck's power system. Arrows and other patterns are selected by the user using the arrow board controls inside the truck cab.

Features: High-output amber LEDs, selection of arrow and other display patterns, easy to operate and maintain, controller located inside truck cab, control box outputs have short-circuit protection, helping prevent blown transistors and selectable automatic or manual dimming. Meets MUTCD.



## Compact Radar-Speed Trailer

The Wanaco Radar-Speed Trailer with full-matrix display features the largest portable speed sign available today. Visible over a standard Jersey barrier traffic divider, the giant display shows motorists' speed in 26-inch characters, warning motorists to slow down by flashing their excessive speed.

- Extra-large full-matrix display
- Optical lenses and sun shades over 26-inch LED characters
- Selectable speed-limit setting
- Clearly displays speed in mph (one or two digits)
- Software-controlled selection of speed units, mph or km/h
- 24x30-inch regulatory speed-limit sign included, other sizes available
- Regulatory sign has changeable speed-limit numbers
- Compact and easily portable, 5-minute setup
- Under 900 pounds (400kg), can be towed by most vehicles
- Standard 2-inch ball coupler tow-hitch
- Battery powered & solar charging
- Locking control box and battery compartment

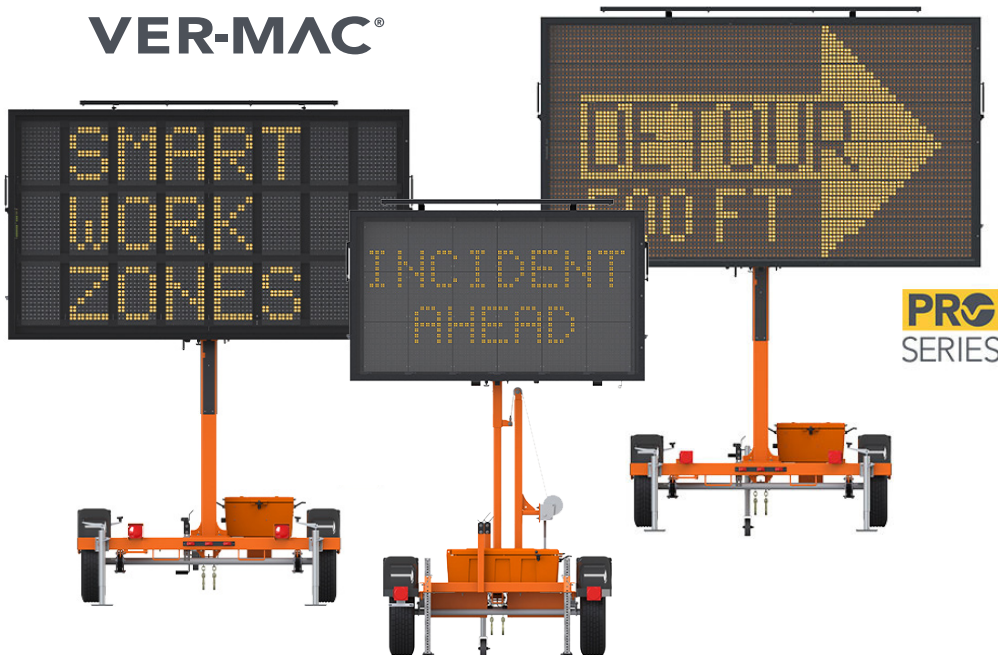




# Traffic Control Equipment



VER-MAC®



## PCMS-1210, PCMS-1500 & PCMS-3812 Pro Series Message Signs

Features Stealth Technology, NTCIP-compliant V-Touch controller, V-Sync Wi-Fi communication and JamLogic® Fleet Management Software.

PCMS-1210: 3-line and 8 characters (18 in.) per line.

PCMS -1500: full-matrix trailer-mounted portable changeable message sign. The default display is 3 lines and 8 characters (18 in.) per line, with the ability of displaying multiple fonts, lines of text and graphics.

PCMS-3812: MUTCD-compliant mid-size full-matrix portable changeable message sign. The default display is 3 lines and 8 characters (12 in.) per line, with the ability of displaying multiple fonts, lines of text and graphics.

TM-3812: a truck mounted version of the PCMS-3812 Message Sign.

## ST-4815 & ST-4825 Pro Series Trailer-Mounted Arrowboards

Ver-Mac's ST-4815 Pro Series is a trailer-mounted arrowboard with 15 LED lamps and the ST-4825 Pro Series is a trailer-mounted arrowboard with 25 LED lamps. Both feature our innovative Single-Mast Design, V-Switch controller, Stealth Technology, OptiBright technology and is wired to integrate the Smart Arrowboard option.

## VM-367225 & VM-4815 Vehicle-Mounted Arrowboards

The VM-367225 is a 36 in x 72 in (914 mm x 1829 mm) 25-light vehicle-mounted arrowboard and the VM-4815 is a 48 in x 96 in (1219 mm x 2438 mm) 15-light vehicle-mounted arrowboard. Our cigarette plug wireless V-Touch controller reduces installation time and costs. The V-Touch AB controller combined with the Auto Up/Down feature make programming safe, quick and easy. A variety of mounting options are available to meet your vehicle needs.

## PSLT-6000 Trailer-Mounted Solar Light Tower

Ver-Mac's PSLT-6000 is visually as bright, effective and compact as conventional diesel light towers, without costing thousands of dollars every year in fuel and labor. Features Ver-Mac's exclusive Nightbrite technology, which provides a brighter, more environmentally friendly and cost-effective lighting system.

## CT-2430 Trailer-Mounted Camera

The CT-2430 is a portable camera trailer designed to provide height and stability for the deployment of outdoor dynamic video surveillance. The CT-2430 camera trailer is perfect to remotely monitor work zones, construction sites, special events or any application where permanent cameras are not available or feasible.

## CT-2020-MW Trailer-Mounted Microwave Sensor

Features a side-fire microwave sensor that provides bi-directional lane data, perlane volume, speed - 85th percentile, occupancy and classification information in up to 16 user-defined detection zones. The CT-2020-MW also comes with a high-speed modem with GPS which allows to gather data remotely using our JamLogic® Software.



## Speed-Mac VP Portable Sensor With Vertical Solar Panel

A portable sensor system packaged inside a standard barricade light combined with a vertical solar panel. The components include a doppler radar, 4G modem with GPS, a lithium battery and a solar regulator. Designed to provide speed data for smart work zones and traffic studies.





# Truck Mounted / Trailer Attenuators



**Scorpion® TMA**  
Truck Mounted Attenuator



## Scorpion® TMA Truck Mounted Attenuator

The Scorpion line of Impact Attenuators, by TrafFix Devices, Inc., are truly "different by design".

The Scorpion TMA consists of strut and cartridge sections that are linked together on a support frame. The curved side rails are made from corrosion resistant aluminum tubes, which offer full width impact protection along the entire length of the unit. The side rails were designed to re-direct errant vehicles away from the rear of the truck (coffin corner). Other manufacturers Crash Attenuator models have little or no side-angle impact protection.

The aluminum boxes are filled with a moisture proof, aluminum honeycomb material. The boxes, together with the curved side rails, absorb the energy from an impacting vehicle. The aluminum boxes are painted with a bright yellow powder-coated finish, for lasting durability.

The TrafFix Devices' Scorpion TMA has been tested and has PASSED ALL optional and mandatory requirements suggested in the NCHRP-350 Report for TL-3. Additionally, the Scorpion TMA has passed the UKTD49, 110 km/h (68 mph) test. The Scorpion TMA has successfully passed a "worse case" side angle re-directive impact test - this goes beyond all governmental testing requirements. Full details available upon request.

## Scorpion Model C TL-3

The Scorpion TMA Model C folds up and over the bed of flat bed, stake bed, or dump trucks. The Model C with its compact design and balanced weight distribution makes it ideal for high-speed travel. The Scorpion TMA Model C provides TL-3 impact protection. Side mounts are also available.

- Weight: 1,975 lbs (900 kg)
- Length: Travel/Storage 2' 5" (.74 m), Deployed 13' 10" (4.21 m)
- Width: 8' (2.45 m)
- Height: Travel/Storage 10' 6" (3.05 m), Deployed 1' (.3 m)
- Tests Passed: 3-50, 3-51, 3-52, 3-53



## Scorpion® Trailer Attenuator

The Scorpion Trailer Attenuator, with its unique curved design, gives full width protection to the back of the host vehicle and protects the "coffin corners" of the truck and is NCHRP 350 tested and approved for all mandatory and optional offset and angled impacts. The Scorpion Trailer requires little or no modification to host vehicle or additional mounting hardware beyond the standard pintle hook and ½" thick x 32" wide steel frame plate. This single point attachment makes the installation of the Scorpion TA quick and easy.

The Scorpion's proven modular design crushes in progressive states allowing quick and economical replacement of damaged parts. Rear axle placement improves trailer stability and prevents the tail from "bottoming out" on driveways or uneven surfaces. The overall length of the Scorpion TA is only 17' 10", the shortest on the market, and is available in shorter (13') lower speed TL-2 (45 mph) model, which is ideal for congested city streets or where posted speeds are 45 mph or less. The integrated electric brake system comes standard on all Scorpion Trailer Attenuators and are automatically activated in the event of trailer separation or hitch failure. Optional Arrow or Message Boards can easily be attached to the Scorpion Trailer.

- Weight: 1,730lbs (785kg)
- Length: 17' 10" (5.44m)
- Width: 96" (2.44m)
- Height: 36" (0.91m)

MASH approved systems available.





## Temporary Crash Cushions / Barriers



# BIG SANDY®



**TraFix  
Devices Inc.**

## Big Sandy® Sand Barrels

The Traffix Devices "Big Sandy" is an Impact Attenuator Sand Barrel that is easy to move and provides external verification of the barrels correct weight of sand. This Impact Attenuator/Crash Cushion Sand Barrel has been tested and certified to meet the crash worthy requirements of NCHRP 350. "Big Sandy" Sand Barrels go above and beyond these requirement to provide the best in highway safety.

### Features:

- Different barrel configurations are used to create all of the weights used in current standard array geometries (200, 400, 700, 1400, and 2100 lbs)
- External sand weight verification is easy - use the right barrel configuration barrel to obtain the correct weight
- Each "Big Sandy" Barrel is made from a single piece of Polyethylene Plastic to eliminate sand leakages - No Edge Seals
- No cone inserts for easy shipping, storing, and installation

## Typical Sand Barrel Arrays for Different Posted Speeds

25 mph 40 kph	21	14	14										
	21	14	14										
30 mph 48 kph	21	14	14	14									
	21	14	14										
35 mph 56 kph	21	14	14	14	7								
	21	14	14										
40 mph 64 kph	21	14	14	14	7	4							
	21	14	14										
45 mph 72 kph	21	14	14	14	14	7	4						
	21	14	14	14									
50 mph 80 kph	21	14	14	14	14	7	4	2					
	21	14	14	14									
55 mph 89 kph	21	14	14	14	7	7	4	2	2				
	21	14	14	14	7								
60 mph 97 kph	21	14	7	7	7	4	4	2					
	21	14	7	7									
65 mph 105 kph	21	14	14	7	4	4	2	4	2	2	2	2	2
	21	14	14	7	4	4	2						
70 mph 113 kph	21	14	14	14	7	4	2	4	2	2	2	2	2
	21	14	14	14	7	4	2						

\*\* NCHRP 350 Tested 12 Barrel Array

Key: Numbers indicate weights in hundreds of pounds required for each sand barrel in the array.

- |    |                    |
|----|--------------------|
| 21 | 2100 lb. = 953 kg. |
| 14 | 1400 lb. = 635 kg. |
| 7  | 700 lb. = 318 kg.  |
| 4  | 400 lb. = 181 kg.  |
| 2  | 200 lb. = 91 kg.   |

This drawing is an example of a typical array plan and should in no way override what is specified by your Local or State Traffic Engineer. Contact your Local or State Traffic Engineer for specific site recommendations for each situation and location.

**TrafFix  
Devices Inc.**

## TrafFix Water-Wall™

The Water-Wall Barrier is a durable side protective temporary crash barrier system that can be used in many situations; from protecting the public surrounding a construction site, to work-zone safety on roads and highways.

The Water-Wall can quickly and easily connect directly to the SLED end treatment which negates the need to shield or flare the end of the barrier. The Water-Wall Barrier is an economic and easy to install crash barrier system. For added privacy and security, the Water-Wall can be equipped with a plastic or chain-link fence (with extended connection pins).

NCHRP 350 Approved As: TL-1 Longitudinal Barrier – HSA-10/B-130, TL-2 Longitudinal Barricade – HSA-10/WZ-224, and TL-3 Barricade – HSA-10/WZ-224.

## TrafFix Water-Cable Barrier™

The Traffix Water-Cable Barrier is designed with three (3) molded in galvanized steel cables that strengthen the water-cable barrier to resist vehicle penetration during an impact. The hinges are designed to allow a 30° pivot between sections and each hinge features a double wall knuckle design that greatly minimizes breakage. Each wall includes one (1) galvanized steel T-pin to securely link Water-Cable Barrier sections together.

The TrafFix Water-Cable Barrier has been MASH Tested, Passed and Eligible at TL-1 31 mph (50 km/hr) and TL-2 43.5 mph (70 km/hr) levels.

*Call for more info.*



# Temporary Crash Cushions / Barriers



G

**RENTALS  
AVAILABLE**



## Absorb 350™ Crash Cushion

The ABSORB 350™ Crash Cushion system has been fully designed and tested to comply with the evaluation requirements of the National Cooperative Highway Research Program Report 350 (NCHRP 350) for Test Levels 2 (70 km/h) and 3 (100 km/h). The Test Level 2 system contains five (5) Energy Absorbing Elements (EAB) and the Test Level 3 system contains nine (9) Energy Absorbing Elements.

It is sometimes desirable to have a crash cushion that has an energy absorbing capacity that is less than Test Level 2, between test Level 2 and Test Level 3, or greater than Test Level 3. Therefore, the following table indicates the number of elements and the element placement configuration that would be required to absorb the kinetic energy of a 2000 kg (4400 lb.) vehicle impacting the front of the ABSORB 350 system, head-on and at the velocity indicated.

MPH | KPH

31	50	2 element
37	60	3 element
40	65	4 element

**Meets TL-2**

44	70	5 element
50	80	6 element
56	90	7 element

**Meets TL-3**

62	100	9 element
65	105	10 element
68	110	11 element
75	120	12 element



## K-Rail Temporary Concrete Barrier

For vehicle control and construction site safety. Reduces crossover accidents, liability exposure, vehicle damage and traffic fatalities. Common non-highway uses for k-rail barriers include security perimeters, protecting fences, site access blockage, earth retention, barricading open pits, defining roadways/walkways, and containment of rock, sand and recyclables in storage areas.



## PCBM-12 Barrier Mount Reflector

For work zone traffic control or permanent delineation. Features over 12 square inches of reflective sheeting and the versatility of either top or side mount placement.

## PCBM-L16 Barrier Mount Reflector

Designed to create delineation that is 48 inches above the roadway, as required by many states. Pexco's PCBM-L 16 is easily mounted on the top of a standard 32 inch barrier wall.

## Dapco Adhesive 795A

A one-part, fast cure adhesive for bonding concrete barrier markers, guardrail reflectors and other delineation products. Offers "primer-less" adhesion to concrete, asphalt and steel. Used with a standard caulking gun.



## RigMAX Sling Rigging Assembly

Includes one 3 foot length of eye & eye round sling and two 7/8 inch alloy screw pin anchor shackles.



## KL12000 Concrete Barrier Lift

The KL12000 Barrier Lift has a 6 to 12 inch grip range to handle 16 – 20 foot lengths of jersey wall easily. It has a 12000 pound capacity and hooks up with just a shackle. The scissor action allows the operator to unload wall directly from the truck and set it into position.



## Line-PRO™ 1112 K-Rail Paint

Line-Pro 1112 is a high hiding white waterborne paint that is specially formulated for use on concrete K-Rails to refresh the look of the K-Rail so that they remain a bright white during the day with a bright appearance at night.



# Lighting / Portable Signals / Automated Flaggers

**RENTALS  
AVAILABLE**



## Portable Diesel Light Towers

Wanco light towers use state-of-the-art technology to achieve superior illumination exceeding government regulations for worksite illumination. With four 1000-watt light fixtures atop a 30-foot variable-height mast, Wanco light towers shine a uniform light pattern across the entire job site.



## Solar Powered Light Tower

In applications where noise is an issue, silent power is the only option. Wanco portable solar towers provide light without noise, and without an external power supply. The energy-efficient LEDs on these light towers are powered by batteries, which are charged automatically via adjustable solar panels.



**W**ANCO®

## Balloon Light Cart

Wanco Balloon Lights provide diffused light that reduces shadows and eliminates glare, making night work safer and easier on the eyes. They light up large areas even at low operating heights, and can use either commercial power or a portable generator. The cart includes steerable wheels and a parking brake.



**NORTH AMERICA TRAFFIC™**

THE LEADER IN TRAFFIC CONTROL SYSTEMS

## PTL 2.4x

### Portable Traffic Signal

The reliable PTL2.4x Portable Traffic Signal is ideal for continuous operation for your long-term traffic control needs. The PTL2.4x is engineered for safety in work-zones including lane closures, cross-roads and intersections.

#### KEY FEATURES INCLUDE:

- Use up to twenty signal trailers on a single site – for work zones with high quantities of intersecting driveways and/or side roads
- Large Full Colour Display – 480p LCD display with easy to read menus and intuitive setup procedures
- Electric actuator lift system • Dual-head with custom features for increased visibility
- 400 watt solar array with 360 degrees rotation range and tilt range of 0 to 60 degrees



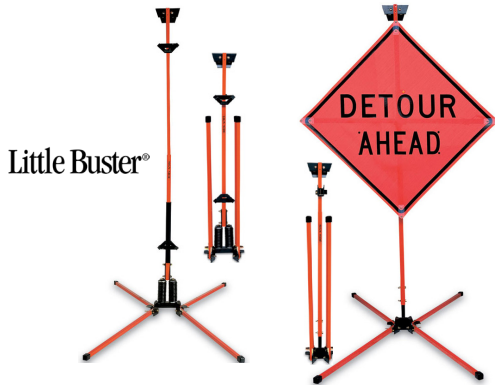
## RCF 2.4 AFAD

The RCF 2.4 Automated Flagger Assistance Device is designed to be operated by a Traffic Control Person via remote control, from a safe location. One flag-person can control one or two units in work zones up to 800 feet long, or two flaggers can operate two units in work zones up to 5 miles long.





# Work Zone Signs / Stands



Little Buster®

**RENTALS  
AVAILABLE**

**TraFFix  
Devices Inc.** 



## **TraFFix Little Buster® & TraFFix Econo Buster® Sign Stands**

Designed to hold 30", 36" and 48" roll-up or rigid signs. Features powder coated paint that resists rusting, telescoping mast to allows all types and sizes of signs to be mounted at various heights, Step-N-Drop legs enabling you to set-up the sign stands in seconds without having to bend over or stoop down and individual leg adjustment for uneven terrain.

## **TwinFlex™ Sign Stand**

TwinFlex™ full size sign stands feature steel and aluminum construction for long-lasting, dependable service. Dual heavy duty steel coil springs provide stability in gusty wind conditions. Features foot-actuated leg releases with two locking positions for stability on uneven terrain and triple flag holder for 3/4" round flag staffs factory installed. MUTCD and NCHRP-350 compliant.

## **TraFFix Tri-Buster® Sign Stand**

Constructed of corrosion resistant heavy duty galvanized steel tubing for a long life at an economical cost. The ballasting hook allows sand bags or weights to be hung from sign stand for added stability. A built-in 3-flag holder secures 2 or 3 standard 3/4" wood dowel flags above the sign. NCHRP-350 compliant with 48" x 48" or smaller rigid and roll-up signs.

**TraFFix  
Devices Inc.** 

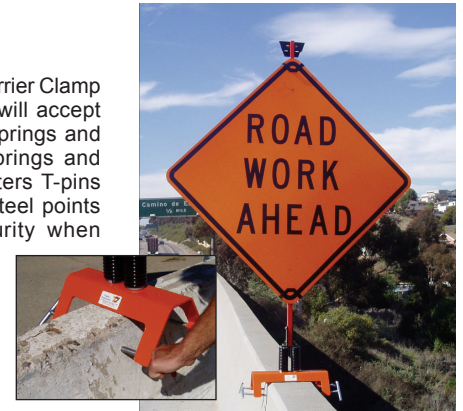
## **TraFFix Sign Stand 22000 Series**

The TraFFix Sign Stand is compact, easy to carry and stores in small areas. It's tip resistant design effectively spills wind and holds a 36" x 36" or 48" x 48" roll-up sign securely without heavy springs or a bulky mast. All parts of the TraFFix Sign Stand can be easily replaced and a complete parts list is included with each stand.



## **TraFFix Barrier Buster Sign Stand**

The Barrier Buster Concrete Barrier Clamp is designed with 3 holes that will accept Little Buster and Big Buster Springs and most other manufacturer's springs and components. The Barrier Busters T-pins are designed with hardened steel points for added stability and security when attaching the Barrier Buster to a concrete barrier wall. The Barrier Buster safely displays 48" x 48" or smaller rigid or roll-up signs.



**bone**  
Safety Signs

**RENTALS  
AVAILABLE**



## **SZ-412-2S Sign Stand**

Holds rigid or roll-up signs 12" above the ground for maximum visibility. This height meets the MUTCD minimum height requirement. The SZ-412-2S's new breakaway base is the first of its kind. The revolutionary breakaway base can be hit from any direction. Weight 41 lbs / 48 lbs. w/ rigid assembly.

## **SZ-412-S Sign Stand**

Holds rigid or roll-up signs 18" above the ground for maximum visibility. This height meets the MUTCD minimum height requirement. The SZ-412-S's new breakaway base is the first of its kind. The revolutionary breakaway base can be hit from any direction. Lightweight design / 23 lbs.

## **SZ-484-2S Sign Stand**

Holds rigid or roll-up signs 84" above the ground for maximum visibility. This height meets the MUTCD minimum height requirement. The SZ-484-2S's new breakaway base is the first of its kind. The revolutionary breakaway base can be hit from any direction. Weight 57 lbs. or 60 lbs. w/ rigid assembly.



# Work Zone / Temporary Signs



## TrafFix Phoenix™ Sign Stand

Designed to accommodate multiple hole patterns found in most size signs. The recycled rubber base with steel plate firmly grips the road surface, while presenting a narrow profile. Two Phoenix Sign Stands can also be used to support barricade panels to create a Type III Barricade. NCHRP-350 certified.



## TrafFix Rigid Sign Bracket

TrafFix Devices 24321 Econo Buster and Little Buster Sign Stand -- Rigid Sign Bracket -- (Need Two Per Stand)



## The Grab Bag - Pinch

Divided in two to form a 'pinch' in the middle to have equal weight on both sides. Applications include safety barricades, temporary fencing, traffic signs, outdoor signage, menu boards, tarp stabilization, etc.



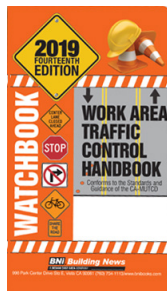
ML KISHIGO

## Warning Flags

Multiple styles and sizes available.

## Work Area Traffic Control Handbook

The leading source of information for traffic control in low-speed construction work areas, thoroughly revised to reflect the California MUTCD!



## Roll Up Reflective Magnetic Pilot Car Banners

36" x 18" with magnetic connectors



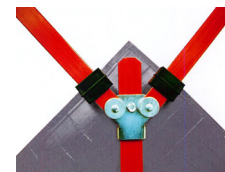
## Weather Resistant Temporary Construction Signs

Available in both paper and coroplast.  
Various styles and messages available. Call for more details.



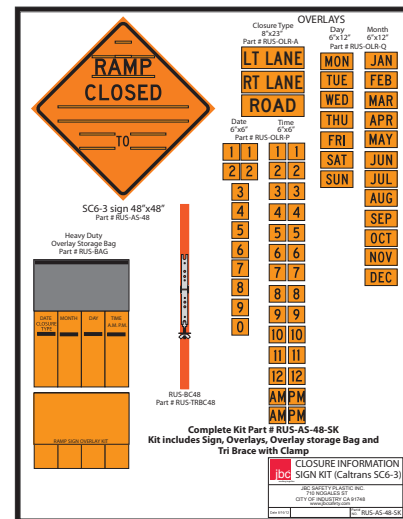
## Cross Brace with 3-N-1 Clamp

Supports roll up sign and secures to stand. Sign mounting bracket with (3) separate slots for mounting to most types and sizes of posts or sign masts.



## Folding Flag System

Designed to allow permanently mounted warning flags to be quickly locked in place, flags deploy by rotating into the display position and sliding the clip down. Reverse for storage.



## 48" Reflective Roll Up Ramp Closure Kit

RAMP CLOSED Kit, Day/Month/Time. Complete kit includes (62) overlays with velcro, overlay storage bag and cross brace with clamp. Made of 3M reflective material, meets MUTCD requirements, NCHRP-350 compliant, graffiti remover resistant, reinforced sewn corner pockets, velcro closure strap.



## Vinyl Roll Up Signs & Overlays

Roll up signage offers increased visibility, easy to transport and store. MUTCD standards require the use of 48" advance warning signs on any roadway with traffic speeds at or in excess of 45 MPH, and reflective signage for use during hours of darkness. JBC's roll up signs are made in the USA, have heavy duty reinforced sewn pockets and a legend that will withstand harsh chemicals such as graffiti remover and brake cleaner. Tack, grime and graffiti can be removed from JBC's roll up signs, without destroying the printed legend. The actual legend can be read whether the sign is folded or rolled up.

Reflective roll up signs are made with 3M reflective vinyl material. Non-reflective roll up signs are made with non-reflective mesh vinyl material. Both styles meet MUTCD requirements and is NCHRP-350 compliant. Features graffiti remover resistant, reinforced sewn corner pockets and velcro closure strap.



# Flagger Safety / Lighting Products



## SHAX® 6100 Lightweight Industrial Umbrella

Meets CPAI-84 flame resistance code. SHAX® 6190 Umbrella Stand and SHAX® 6193 Umbrella Trailer Hitch Mount sold separately.



## FlaggerJoe™ - Safety Sign System

Mash Crash Tested Approved by the FHWA WZ-325 Certificate. Rolling Base and 18" or 24" Sign Mounts sold separately.



## Roll-Up Stop/Slow Paddles

Roll-Up stop/slow paddles offer full size paddles in a compact, lightweight, and easy to store design. Available in 18" and 24" octagons and in a variety of reflective and non-reflective materials, these kits come complete with double sided roll-up sign face, handle, and storage bag.

## Stop/Slow Paddles - Rigid

Rigid stop/slow paddles are available in both 18" and 24" octagon versions with reflective and non-reflective surfaces. Choose either plastic or aluminum substrates.



## Pelican™ 9490 Remote Area Light

Lighting solution for first responders, industrial and aerospace applications. Up to 6,000 lumens (calculated) and 24 hrs of run time. Free app with Bluetooth® wireless technology controls multiple units. App runs on iPhone devices. Available in black and yellow.

## Pelican™ 9600 LED Modular Light

Chain up to 34 Pelican™ 9600 LED Modular Light heads to produce over 100,000 combined lumens. Ready to mount to fences, hang overhead or stand on its own (stand system-poles, bases and cables sold separately).



## 2490 LED Specialty Light

Features and screw-on traffic wand and, 64 lumens of clean bright light, and a run time of 12 hours. Powered by 4AA batteries



## Pelican™ 2360 Tactical Flashlight

Emits a peak output of 375 lumens, includes 3 modes – High / Strobe / Low and allows the user to select from 4 selectable programs.



## Pelican™ 1910 Flashlight

The high and low light output modes make for an efficient lighting tool; the perfect personal light.



## Pelican™ 7600 Tactical Flashlight

Performance surpassing 900 lumens coupled with a USB rechargeable lithium ion battery and an extreme high performance white LED light output, a red and green LED included.



## Lite 360 Hard Hat Light

Built with the high quality, tough equipment you've come to expect from Bullard, the new Lite 360 allows workers to see and be seen at any time of day.

Lite 360 features a pivoting headlamp, six peripheral lights, and multiple lighting modes for worker visibility in any work environment.



## EXTREME Standing Mat®

Designed for fixed workstations. Yellow safety caution bars alert 1" height. The 1" thick closed cell silicone free nitrile foam rubber will not absorb liquids.



## RoadQuake Temporary Portable Rumble Strips

Available in either an 11 foot one-piece foldable design for easy transport and storage, or individual 45 inch long connectable sections for when space is limited.



## Pelican™ 2720 Headlamp

Turn on the light with a wave of a hand. Additional features include: Low level red light that preserves night vision, for nighttime applications. Signaling red (S.O.S) beacon light. Optical 4x magnification allows for a wide or penetrating beam. Including a variable light output from 100%-10%.

## Pelican™ 2760 Headlamp

Hands free design with multiple lighting features that include high, medium, low, flashing, downcast, and night vision red LED modes.



# Barricades / Pedestrian Control



## 37000 Series High Impact Plastic Folding Barricade

Made from durable impact resistant polyethylene. Blow molded legs provide increased strength to minimize barricade damage and to prevent sagging in extreme heat. Modular design allows for easy replacement of components. Unique San-Fil bottom panel eliminates messy sand bags.



## 35000 Series High Impact Metal Leg Barricade

Features metal legs with High Impact (blow molded) panels. Durable impact resistant plastic panels are recessed to protect reflective sheeting. NCHRP 350 accepted with standard or "D" cell barricade lights. Meets MUTCD standards.



## Metro-A-Cade A-Frames & Rails

Made of impact resistant polyethylene, rigid, A-Frame barricade leg is sand fillable for ballasting, stackable for storage and transportation, and can be used with the TrafficX I-Beam Rail, Phoenix Plastic Rail, 1" x 8" or 2" x 8" nominal lumber. Accommodates standard or "D" cell barricade light.

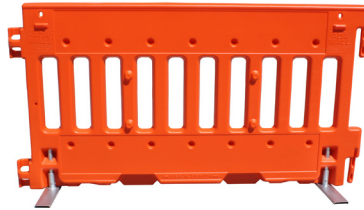
optional second rail

**RENTALS  
AVAILABLE**

**Traffix  
Devices Inc.**



**URBANITE**



## Urbanite® & ADA Wall Crowd Control Barriers

Creates a continuous hand guided safe passage through work zones. Made of UV stabilized, high density polyethylene. Quickly and easily link together in 6 foot sections to allow the contractor flexibility in creating a safe pedestrian pathway. Legs turn parallel to wall for storage and stacking.

The TrafficX ADA Wall is MASH Tested, Passed, and Eligible as TL-3 Longitudinal Channelizing Device. Two ADA Compliant tubular galvanized steel Step-N-Deploy legs are securely installed at the bottom of each ADA Wall section and are quickly and easily deployable with the toe of a boot.

Weighing only 23 lbs., the durable double walled, non-flexible, lightweight design makes the Urbanite and the ADA Wall easy to lift on and off the truck and simple to connect. The ten molded-in vertical windows allow a guide dog to see what is on the other side of the wall, reduce wind load, add strength and stability, and reduce overall weight.

**RENTALS  
AVAILABLE**

**Three D  
TrafficWORKS**  
Innovative Traffic Safety Products



**PLASTICADE®**



## Plasticade® Type I & II Barricades

All plastic and maintenance free, never rusts, needs painting, or leg straightening. Molded hollow so it can be internally ballasted with up to 10 lbs. of dry sand. Features "click lock" hinges for a positive interlock in the open position. NCHRP-350 Accepted for use as a sign stand. Meets MUTCD Standards.

## Plasticade® Lo-Pro™ Airport Barricade

Low-profile interlocking system used to close taxiways, runways, and delineate construction areas. Fill with up to 220 lbs. (26 gallons) of water. Forklift access, recessed areas at bottom of barricade. Stackable for transportation and storage.



## Plasticade® Signicade®

All plastic heavy duty sign stand. Vinyl signs can be applied directly to the sign face. Use vinyl sheeting, corrugated plastic, metal, or acrylic signs. Holds two 24"W x 36"H signs. Recessed area protects sign. Fill with dry sand. Each stand has 2 fill holes, 1 on each side of the frame. 5 lbs. of sand per hole for a total of 10 lbs. per stand is recommended. Play sand is suggested for ease of filling.



## TD2300 Works Type I & II Barricades

Wood panels with 14 gauge galvanized steel legs. Sheeted with engineer grade (EG) reflective sheeting.

## TD2500 Wood and Steel Type III Barricade

Durable hot rolled carbon steel upright frame and base stand with 2" x 2" square tubing receiver. Designed to accommodate two warning lights.



## JBC Type III Barricade

Panels extruded from a unique blend of ABS plastic. 11 gauge galvanized steel legs and 12 gauge galvanized steel feet.



## Pre-Striped Barricade (PSB) Sheeting

PSB Sheeting is scratch resistant and has alternating 4" stripes running diagonally at an angle of 45°. Coated with an aggressive, high-tack pressure sensitive adhesive that will bond well to most substrates.



# Pedestrian Safety / Barricade Lighting



## SafetyRail™ ADA-Compliant Pedestrian Barricade

Meets ADA Guidelines and MUTCD 2009 Edition Standards both as a sidewalk closure or longitudinal channelizer. Designed for use with the PSS Wave Guide Rail, SafetyRail™ provides pedestrians, especially those with limited vision or mobility issues, with a safe, continuous guide through pedestrian work zones. Accepts pedestrian aids like warning lights and Audible Information Devices.

**RENTALS  
AVAILABLE**



## "Bike Rack" Crowd Control Barrier

"Bike Rack" Crowd Control Barrier, Galvanized Steel, Gateable, Stackable, 79" L x 43" H

**Energizer**



## Batteries for Barricade Lights

**RENTALS  
AVAILABLE**

**pi-lit**

## pi-lit® Traditional Type-A/C Lamps

Provides maximum visibility with long lasting LEDs to reduce replacement costs. The team at Pi-Lit updated the firmware to be 3x brighter than the previous lamp. Durable housing ensures lamps will hold up in the harsh conditions of your construction sites. Meets ITE and MUTCD specifications and is NCHRP-350 approved.



### 3V System (BC3.AC.D3)

- 6+ months battery life
- 4 off-the-shelf Alkaline D Cell batteries
- New increased brightness firmware
- Three position switch: Flash/Steady-Burn/Off



### Solar System (BS.AC.D1)

- 2+ weeks of operation with no sunlight
- Does not require any off-the-shelf batteries
- Environmentally friendly solar rechargeable
- Lightest and most durable solar type A/C lamp on the market
- Rapid recharge of 1 hour
- New increased brightness firmware (coming soon)



### 6V System (BC6.AC.D6)

- 6+ months battery life
- Two 6-volt batteries
- New increased brightness firmware (coming soon)

## pi-lit® Smart Sequential Work Zone Lamps

Easy to deploy, only needing a push of a button to turn on and sync. The 5+ month long battery life and reliability will guide vehicles safely through your work zone night after night. There is a reason more and more states are requiring the use of sequential warning lamps in the work zone; It's safer! pi-lits® new "pair" mode makes syncing multiple strings of lamps easier; moving away from the previous "group Channels". With a new low cost sequential lamp option and cellular connectivity on the horizon, pi-lit is putting the smart in smart work zones.



### Sequential Contractor+ Barricade Lamp

- New group "pairing" mode
- Long battery life (6+ months of continuous flashing)
- Remote control capability
- Meets MUTCD, ITE, and NCHRP-350 requirement



### Sequential 5-Button Barricade Lamp

- 5-button design allows for all features at your finger-tips
- Long battery life (5+ months of continuous flash)
- Remote control capability
- Meets MUTCD, ITE, and NCHRP-350 requirements



### Smart Solar B-Light (Radio Linked)

- Pi-Lit® "pair" system allows you to sync together multiple B-Lights. Turn off all B-lights from a single remote control
- Sync'd B-Lights will flash simultaneously. This creates enhanced visual warning to motorists that a work zone is approaching and workers are present.
- Remote control capable - radio and cellular linked
- Meets MUTCD, ITE, and NCHRP-350 requirements

**SOLAR  
Masters**



## 360 Degree Type-D Solar Powered Airport Barricade Light

Screw/threaded style base. 60 +/- flashes per minute, .4 watt solar panel, (2) hi-intensity LEDs, 2.4VDC rechargeable battery, red polycarbonate lens, ABS base, automatic dusk-dawn switch, includes security bolt tool and installation hardware. FAA Advisory Circular No. 150/5370-2F compliant.

## Type-A/C Dual Function Solar Powered Barricade Light

60 +/- flashes per minute, .4 watt solar panel, (2) hi-intensity LEDs, 2.4VDC rechargeable battery, amber polycarbonate lens, ABS base, automatic dusk-dawn switch, includes installation hardware. Designed to meet or exceed MUTCD Requirements and I.T.E. Specifications. The Type-A/C light is also NCHRP-350 Certified.

## Type-B Solar Powered High-Intensity Barricade Light

60 +/- flashes per minute or steady burn, 1.6 watt solar panel, (9) hi-intensity LEDs, 4VDC rechargeable battery, amber polycarbonate lens, yellow polyethylene base, includes security bolt tool and installation hardware. Designed to meet or exceed MUTCD Requirements and ITE Specifications. The Type-A/C light is also NCHRP-350 Certified.

# Cones / Pedestrian Directional Signs

**RENTALS  
AVAILABLE**



## Revolution Series Traffic Cones

Manufactured using premium grade PVC Injection molding technology, resulting in the most durable traffic cones available in the U.S. market. Reflective RS Traffic Cones features 3M 3840 hi-intensity reflective cone collars, complementing the high quality of the Revolution series creating a cone with outstanding durability and superior night-time safety. Available in orange, blue, pink, white, yellow, green and lime green.

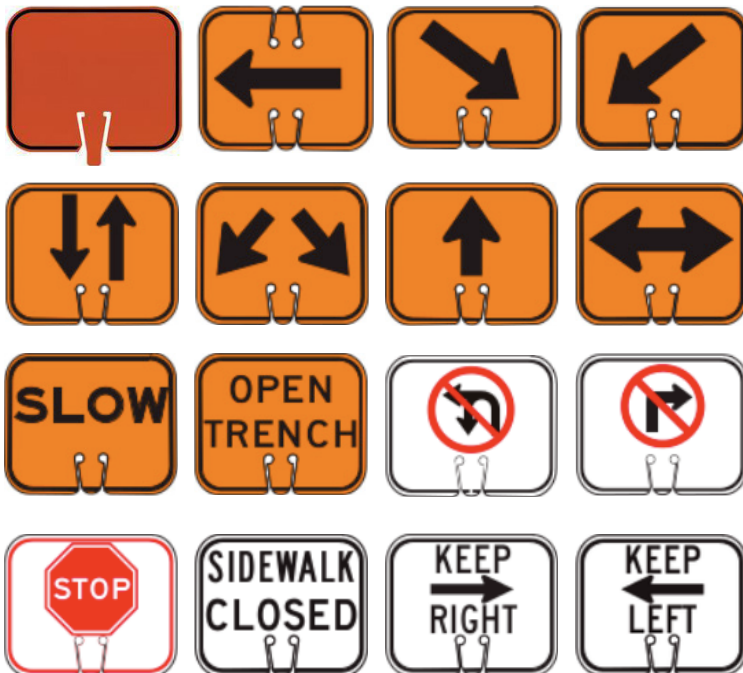


## Retractable Cone-Bar

Designed to work with traffic cones or Knob-Top delineators. The Cone-Bar is extremely versatile for road trench or utility works use, construction sites, parking lots, pedestrian areas, and more. Compared to warning tape, the Cone-Bar is highly effective in terms of both cost and functionality. The Cone-Bar is reusable, highly reflective at night, and it creates true work-site traffic control.

## Cone Signs

13" X 11" Cone Sign Signs. Plastic with black lettering. Easily clips on to all JBC cones and delineators. Common legends and custom legends are available.



## Colored Safety Cones

All vinyl construction assures durability and flexibility in all weather conditions. Long lasting brilliant fluorescent color provides high visibility protection. Ultraviolet stabilized color provides maximum resistance to fading. High density base creates low center of gravity for maximum stability. Engineered to meet MUTCD specifications.

## PROUD DISTRIBUTOR OF



### RANGE & COVERAGE

VHF & UHF	Open areas without obstructions	Steel and/or concrete reinforced bldgs	High-rise buildings
UHF 1.5 Watt	Up to 5 miles	Up to 225,000 sq. ft.	Up to 17 floors
UHF 2 Watt	Up to 6 miles	Up to 250,000 sq. ft.	Up to 20 floors
UHF 5 Watt	Up to 7 miles	Up to 370,000 sq. ft.	Up to 33 floors
VHF 2 Watt	Up to 6 miles	Up to 220,000 sq. ft.	Up to 13 floors
VHF 5 Watt	Up to 7 miles	Up to 300,000 sq. ft.	Up to 18 floors

*Talk range will vary based on terrain, conditions and type of radio*





# Delineators / Drums / Bases



**RENTALS  
AVAILABLE**

**PLASTICAIDE®**



## GrabberTube® II Delineator

The NEW Grabber Handle and Grabber Hole in the stem provides convenient carrying handles for movement and deployment, even off the bed of a work truck.

## Grabber-Cone® Delineator

Can support the weight of stacked cones and bases without permanent distortion. Its low density polyethylene material and handle design prevents the cones from sticking together when stacked. The Grabber-Cone can be stacked with or without bases.

## Looper-Tube® Delineator

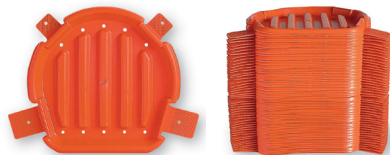
Closing off an area of the job site is quick and easy when utilizing the "loop" style handle with two (2) or more Looper-Tubes tied together with caution tape, flag line, or rope.

## Looper-Cone®

The Looper-Cone, with its patented reinforced handle design and durable low density polyethylene plastic keeps the cones shape, reducing crushing and breaking and prevents the cones from sticking together when stacked. The Looper-Cone can be stack with or without bases.

## Traffix Channelizer Drum™

Tapered design allows stacking with or without barricade lights for easy handling and storage. Drum and base remain "snapped together" until impacted or separated for transportation and storage.



## Sand Bag Snap-Lock Base

Economical and easy to use - simply place the base on the ground, add a sand bag and snap - lock the drum top to the base. Made of durable, impact resistant polyethylene.

## Traffix Tire Ring Base

The tire ring eliminates the need for sandbags that tear or break leaving messy sand on the roadway. The rubber tire ring "grips the road" and minimizes drum movement and rotation.



## Navicade™ Channelizer & 30 lb. Base

Slim design, perfect for narrow roadways where space is an issue. Very durable, designed to rebound after impact. Oversized handle with flashing light mounting receptacle makes it easy to grab with gloved hand or light attached. Stackable with or without base for easy transport and storage. MASH Accepted, Meets MUTCD Standards. Made in the U.S.A.

## Gemstone™ Vertical Panel & 30 lb. Base

Designed to withstand repeated impacts with little or no damage to vehicles or unit. Oversized handle with comfort grip can be picked up easily, even with light attached. Stackable with or without base. Flashing light mounting receptacle and recessed panel for reflective sheeting, 8" W x 36" H. MASH Accepted WZ-300, Meets MUTCD Standards. Made in the U.S.A.

## Commander™ Traffic Drum

Available in high and low density polyethylene. Five tier design. New tire locking ring design inhibits movement of drum on road surface and wedge fit created from skirt ramp and elliptical shaped bottom. New tighter stacking & packing maximizes transport and storage space - 20% More Per Truckload. No need to remove flashing light, folds down for easy stacking. MASH Accepted, Meets MUTCD Standards. Made in the U.S.A.



## JBC N-Top & D-Top Delineator Post

N-Top Delineator Post has a 3" hand grip on top for ease of loading and unloading. It is also designed to be used with caution tape and/or JBC Cone Bars to form an instant barrier.

The D-Top fits even the largest hands. Hole at top to mount a barricade light and when used in conjunction with the JBC cone bar, you can create a barrier in seconds!

# Reflective Safety Clothing

## The ML Kishigo Difference

**KISHIGO®**

Premium  
**Brilliant Series®**  
Part #1510



**IS YOUR SAFETY PROGRAM  
HANGING BY A THREAD?**

Premium  
**Brilliant Series®**

*Disclaimer: The ML Kishigo vest above is ANSI compliant for a minimum of 25 wash cycles, though utilizes high quality reflective materials compliant up to 50 wash cycles.*

### 1 - STITCHING

**ML KISHIGO:** Triangle Security Stitch to reinforce corner pockets so seams don't tear even under the most punishing circumstances.

**OTHERS:** Single stitched pockets that tear frequently.

### 2 - FABRIC

**ML KISHIGO:** Athletic high-performance mesh material – similar to high performance Athletic Jersey's and shorts.

**OTHERS:** Textured mesh material that clings to the body.

### 3 - SIZING

**ML KISHIGO:** Reliable sizing with large generous armholes for a true-to-size fit.

**OTHERS:** Inconsistencies in manufacturing lead to improper fit and discomfort – oftentimes resulting in smaller armholes.

### 4 - HEM REINFORCEMENT

**ML KISHIGO:** Heavy duty webbing reinforcement around neck, front closure and bottom of vest to strengthen hem and prolong life of vest.

**OTHERS:** Single stitched bias provides the bare minimum amount of protection from wear and tear in the rugged environment.

### 5 - REFLECTIVE TAPE

**ML KISHIGO:** High performance reflective tape that can withstand 50 wash cycles and still maintain ANSI compliance.

**OTHERS:** Cheaper reflective tape that falls off and wears away easily.



#### **Premium Brilliant Series® 6 Pocket Heavy Duty Vest**

ANSI 107 Type R | Class 2 Compliant.  
1510 lime. Sizes S-5X.



#### **Solid Front Mesh Back Vest**

ANSI 107 Type R | Class 2 Compliant.  
1163 lime / 1164 orange. Sizes M-5X.



#### **Ultra-Cool™ 3 Pocket Mesh Vest**

ANSI 107 Type R | Class 2 Compliant.  
1085 lime. Sizes M-4X.



#### **Class 3 Professional Surveyors Vests**

ANSI 107 Type R | Class 3 Compliant.  
S5010 lime. Sizes M-2X.



#### **6 Pocket Contrast Mesh Vest**

ANSI 107 Type R | Class 3 Compliant.  
1242 lime / 1243 orange. Sizes M-5X.



#### **Class 3 Long Sleeve T-Shirt**

ANSI 107 Type R | Class 3 Compliant.  
9145 lime. Sizes M-5X.



# Rainwear / Seasonal Clothing

**Premium  
Black Series®**



## **Premium Black Series® Rainwear**

ANSI 107 Type R | Class 3 Compliant Jacket  
RWJ106 lime. Sizes S/M - 4X/5X.

ANSI 107 Class E Compliant Pants.  
RWP106 lime pants / RWB106 lime bibs. Sizes S/M - 4X/5X.



## **Hard Hat Sun Shield w/ Elastic Band**

2810 lime / 2813 orange. One size.



## **Premium Black Series® Windbreaker**

ANSI 107 Type R | Class 3 Compliant.  
WB100 lime. Sizes M-5X.



## **Hoodie Sweatshirt with Zipper**

ANSI 107 Type R | Class 3 Compliant.  
JS102 lime. Sizes M-5X.



## **Ultra-Cool™ Mesh Pants**

ANSI/ISEA 107 2010 Class E Compliant.

3112 lime with orange strips. Sizes S/M - 2X/4X.

3108 lime with silver strips. Sizes S/M - 5X/6X.

3117 lime with silver strips on orange contrast  
and zipper legs. Sizes S/M - 2X/4X.



## **Storm Cover Rainwear**

ANSI 107 Type R | Class 3 Compliant - Jacket  
RWJ102 lime. Sizes S-M thru 4X-5X.

ANSI 107 Class E Compliant - Pant.  
RWP102 lime. Sizes S-M thru 4X-5X.



## **Rainwear Jacket & Pant Set**

ANSI 107 Type R | Class 3 Compliant - Jacket  
ANSI 107 Class E Compliant - Pant.  
RW110 lime. Sizes S-M thru 4X-5X.



**RADIANS®**



## **SV Non-Rated Vest**

Not ANSI Compliant.  
RAD-SVG lime



## **Radians Tecona™ Safety Eyewear**

Available in Clear Frame/Clear Lens  
and Smoke Frame/Smoke Lens styles

## **DEWALT DPG108 Renovator® Premium Safety Eyewear**

Available in a Black Yellow Frame/  
Smoke Lens style



## **Radians SV55 Class 2 Heavy Woven Two Tone Engineer Vest**

ANSI/ISEA 107-2015 | Class 2 Compliant.  
SV55-2ZOD orange. Sizes M-5X



## **Crossfire CK7™ Premium Safety Eyewear**

Available in a Shiny Black Frame/  
Clear Lens style

# PPE / Cooling Products / Fall Protection



**Skullerz® Loki Safety Glasses/Goggles**



**Skullerz® Odin Safety Glasses**



**Skullerz® Dagr Safety Glasses**



**Skullerz® Baldr Safety Glasses**



**Chill-Its® 6685 Dry Evaporative Cooling Vest**



**ProFlex® 710 HD Utility Gloves & ProFlex® 710TX HD + Touch Gloves**



**Chill-Its® 6670CT Evap. Hard Hat Neck Shade w/CT**



**ProFlex® 812 Standard Utility Gloves**



**Chill-Its® Cooling Headbands, Bandanas & Wraps**



**Chill-Its® 6717CT Evaporative Cooling Hard Hat Neck Shade w/ Cooling Towel**



**SHAX® 6010 Lightweight Tent & SHAX® 6095 Misting System**



**Bullard Classic Series Full Brim Hardhat & Accessories**



**Class A & B First Aid Kits**



## PROUD DISTRIBUTOR OF



**ANCHORS**

**HARNESSES**

**CONNECTORS**

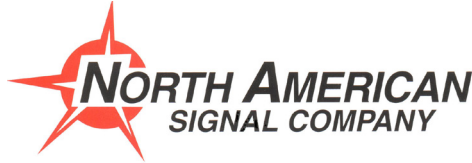
**SAFETY PRODUCTS**



**GIVE US A CALL FOR MORE INFO**



# Vehicle Warning Lights



## LEDQ375MX-A LED Warning Light

- 12/24V, LED Warning Light
- 72 Quad Flashes/minute
- "Brightest little light on the market", only 4" tall
- Magnet mount, 15' straight cord and plug with built in on/off switch



## LED625MX-A LED Warning Light

- 12/24V, LED Warning Light
- 5 User Select Flash Patterns
- Versatile, light weight all-purpose LED warning light
- Magnet mount, 15' straight cord and 2 button plug, on/off switch and momentary switch to change flash patterns



## LED675F-A LED Warning Light

- 12/24V, LED Warning Light
- High Power, Super Bright LED output
- 5 User Select Flash Patterns
- Permanent mount flange base



## MBX24-C/A LED Mini Bar

- 12/24V, Ultimate LED Mini Bar
- 24" wide x 3" tall
- User Select Flash Patterns
- Permanent mount, includes dash mount pattern changing button



## LED416LP-C/A Warning Light

- 12/24V, Low Profile (under 3" tall) High Power LED Warning light
- Heavy Duty Aluminum Base and Heat Sink/Top
- 5 User Select Flash Patterns
- Permanent mount flange base

## LED416LP-C/X Warning Light

- Same as above
- Features a Dual Color LED display, Flash Patterns alternate between colors as well as a single color Hex flash option



## MMBZLEDFLM-C/A LED Mini Bar

- 12/24V, Low Profile Economy LED Mini Bar, Clear Dome/Amber LEDs
- 17.25" wide x 2.75" tall
- User Select Flash Patterns
- Magnet mount with 15' cord and 2 button plug, on/off switch and momentary switch for pattern changing



## MINILP-C/A LED Micro Mini Bar

- 12/24V, Low Profile, High Power LED Micro Mini Bar
- 13.5" wide x 2.75" tall
- User Select Flash Patterns
- 4 Post permanent mount, two color units available MINILP-C/X



## LED4400 / LED4500 Surface Mount Warning Light

- 12/24V High Power LED Surface Mount warning light
- 4.5" wide x 1.25" tall, Die Cast aluminum base
- 10 User Selectable Flash Patterns
- Available in 4 LED single color or 2 LED dual color units
- Two units can communicate for synchronized flash patterns



## CLKLED6-A LED Corner Light

- 12/24V Corner Light LED
- Wide angle optics, 22 User Select Flash Patterns
- Installation required, 1" hole drilled into turn signal housing required
- Amber or White colors available
- Includes mounting flange for external mount



## VPEHD-F150

- Designed to work with Ford F-150, 2015 and newer models
- Drill free installation, clamp and gasket mount
- UV protected black powder paint finish
- Latest version "HD" is 50% thicker than original model
- Metal magnet plate available. 3rd Brake Light not included.

## PSBLED-R

- Designed for parking lot/crowd control/ accident-traffic control
- Light weight and durable, operates off of 2 "C" batteries
- Flashing or Steady-burning modes available with push button
- 21" long x 1.5" diameter



## WLED-5S LED Work Light

- 12/24V, LED Work Light
- Includes 5 three watt LEDs, produces 1100 Lumens
- Combination Flood / Spot
- Sealed water tight, IP: 67 rated

# Road Flares / Warning Devices



**Classic Road Flare w/ Red LEDs**

Requires 2 AA replaceable batteries (included).



**Super Road Flares w/ Red LEDs**

Rechargeable. Available as a single or 4-pack.



**Baton Traffic Flares**

Rechargeable.



**FlareAlert Beacon Pro LED Safety Lights**

LED Available Colors: Red, Yellow, White



**Cargo Tie-Downs**



**Triangle Reflector Warning Kit**



**Emergency Roadside Flares**



**Slow Moving Vehicle Sign**



**Vehicle Warning Flags**



**Oversize Load Banner**



**Safety Fencing & Sandbags**



# Index

2-Way Radios.....	36	Emergency Roadside Flares.....	42	Message Boards.....	24	Sign Stand, Plastic.....	34
3M Certified Sign Fabrication.....	6	End Terminals.....	11	MMA Line Striper.....	17	Sign Stands, Work Zone.....	31-32
Abrasive Blasters.....	17	Epoxy, Marker.....	20	Motorcycle Barrier.....	10	Signcade.....	34
ADA Warning Mats.....	22	Epoxy, Marker.....	21	Overlay Markers.....	20	Signs, Cone.....	36
Adhesive Pads, Channelizers.....	12	Equipment Rentals.....	8, 9	Oversized Load Banner.....	42	Signs, Crosswalk.....	13
Adhesive Pads, Road Markers.....	20-21	Fall Protection.....	40	Paddles, Stop Slow.....	33	Signs, LED.....	13
Airport Barricades.....	34	Fencing.....	42	Paint Stripers.....	16	Signs, Pilot Car.....	32
Applicator, Thermoplastic.....	18	FG 527 Guardrail Posts.....	12	Paint, K-Rail.....	29	Signs, Stop Slow.....	33
ArmorGuard Barrier.....	10	FG-300 Channelizers.....	12	Paint, Marking.....	23	Signs, Work Zone.....	31-32
Arrow Boards.....	25	FG-500 Delineators.....	12	Paint, Striping.....	19	Skids, Sign.....	15
Asphalt Repair.....	21	Field Stripers.....	17	Parking Curbs.....	22	Slip Base.....	15
Attenuator Installation.....	7	First Aid Kits.....	40	Parking Lot Marking.....	16	Slow Moving Vehicle Sign.....	42
Attenuators.....	10	Flagger Device.....	30	Parking Lot Paint.....	19	Speed Bumps.....	22
Attenuators, Truck Mounted.....	27	Flagger Safety.....	33	Parking Lot Products.....	22	Speed Signs, Radar.....	14
Automated Flagger Device.....	30	Flagging Service.....	7	Pavement Markers.....	20	Speed Trailer.....	25
Bags, Sand.....	42	Flares, Road.....	42	Pavement Marking.....	16-19	Sprayers, Disinfectant.....	17
Balloon Light.....	30	Flashing Crosswalk System.....	13	Pavement Paint.....	19	Square Slip Base.....	15
Barrels, Sand.....	28	Flashlights.....	33	Pedestrian Control.....	34	Standing Mats.....	33
Barricade Lights.....	35	Folding Barricades.....	34	Pedestrian Crosswalk Systems.....	13	Stencils.....	19
Barricades.....	34	Glass Beads.....	19	Pilot Car Signs.....	32	Stick, Striping.....	23
Barrier, Concrete.....	29	Gloves.....	40	Pole Crash Cushion.....	10	Stop Slow Paddles.....	33
Barriers.....	10	Graco Line Stripers.....	16	Pole-Safe Systems.....	15	Stripers.....	17
Barriers, Crash.....	28-29	Grinding Equipment.....	16	Portable Cross Walk Sign.....	12	Striping Paint.....	19
Barriers, Crowd Control.....	34-35	GrindLazer Systems.....	16	Portable Lighting.....	30, 33	Striping Paint, Temporary.....	23
Batteries.....	35	Guardrails.....	11	Portable Traffic Signals.....	30	Striping Stick.....	23
Beacons, Road.....	42	Guards, Corner.....	22	Posts, Guardrails.....	11	Support Systems, Sign.....	15
Big Sandy Sand Barrels.....	28	Guards, Wall.....	22	PPE.....	40	Surface Mount Channelizers.....	12
Bike Lane Systems.....	13	Halftrack Markers.....	20	Preformed Thermoplastic.....	18-19	Surface Treatments.....	18
Bitumen Applicator.....	18	Handbook, Traffic Control.....	32	Premelter, Thermoplastic.....	18	Survey Paint.....	23
Blasting Equipment.....	17	Hardhats.....	40	Radar Speed Signs.....	14	Tape, Pavement Marking.....	20
Bollard Covers.....	22	Hardware, Guardrails.....	11	Radar Speed Trailer.....	25	Tape, Reflective.....	42
Breakaway Sign Posts.....	15	Hardware, Signs.....	15	RadarSign Systems.....	14	TAU-M Crash Cushion.....	10
Break-Safe Systems.....	15	Hawk Hybrid Crosswalk System.....	13	Radios, 2-Way.....	36	Telespar Sign Support.....	15
BriteSide Reflective Panels.....	14	Headlamps.....	33	Rainwear.....	39	Temporary Construction Signs.....	32
Bumpers, Parking.....	22	Hot Applied Sealant.....	21	RAPTOR Crash Cushion.....	10	Temporary Striping Paint.....	23
Butterfly Guardrail Reflector.....	12	I-Flex Guardrail Markers.....	12	Reflective Clothing.....	38-39	Tents.....	40
Butyl Pads, Channelizers.....	12	In-Road Crosswalk Lights.....	13	Reflective Glass Beads.....	19	ThermoLazer Systems.....	16
Cargo Tie-Downs.....	42	Jackets, Reflective.....	39	Reflective Panels, Signs.....	14	Thermoplastic Marking.....	19
Chalk, Marking.....	23	Kenwood Radios.....	36	Reflective Tape.....	42	Thermoplastic Systems.....	18
Channelizer Installation.....	7	King Block.....	11	Reflectors, Barrier.....	29	Tie-Downs.....	42
Channelizers.....	12, 37	KoldSpray Line Striper.....	17	Reflectors, Guardrails.....	12	Traffic Cones.....	36
Chip Seal Markers.....	20	K-Rail Barriers.....	29	Remote Area Lighting.....	33	Traffic Control Handbook.....	32
City Posts.....	12	Lamps, Barricade.....	35	Rentals, Work Zone Equipment.....	8, 9	Traffic Control Services.....	7
Closure Marker, Runway.....	24	Lane Closure Service.....	7	Repair, Asphalt.....	21	Traffic Drums.....	37
Clothing, Reflective.....	38-39	LaneLight Crosswalk Systems.....	13	Road Closure Service.....	7	Traffic Plans & Permits.....	7
Cold Mix Repair.....	21	Layout Products.....	23	Road Flares.....	42	Traffic Signal, Portable.....	30
Color-Safe Pavement Markings.....	18	LED Road Flares.....	42	Road Markers.....	20	Trailer Attenuator.....	27
Concrete Barriers.....	29	LED Signs.....	13	Road Paint.....	19	Tree Crash Cushion.....	10
Cone Signs.....	36	Light Bars.....	41	Road Pavement Markers.....	20	Truck Mounted Attenuators.....	27
Cone-Bar.....	36	Light Towers.....	30	Road Sealant.....	21	Type I, II & III Barricades.....	34
Cones, Traffic.....	36	Lighting, Portable.....	30, 33	Road Warning Kit.....	42	Umbrella, Flagger.....	33
Conspicuity Tape.....	42	Lights, Barricade.....	35	Roll-Up Signs.....	31-32	Vehicle Warning Flags.....	42
Construction Signs.....	32	Lights, Safety.....	42	Round Slip Base.....	15	Vehicle Warning Lights.....	41
Cooling Products.....	40	Lights, Vehicle.....	41	Rumble Strips.....	33	Vests, Cooling.....	40
Corner Guards.....	22	Line Marking.....	17	Runway Closure Marker.....	24	Vests, Reflective.....	38
Crash Cushion Installation.....	7	Line Remover.....	18	Safety Cones.....	36	Walkie Talkies.....	36
Crash Cushions.....	10, 28-29	Line Stripers.....	16	Safety Fencing.....	42	Wall Guards.....	22
Cross Walk Sign, Portable.....	12	LineDriver Systems.....	17	Safety Glasses.....	39-40	Wanco.....	23-25
Crosswalk Systems.....	13	LineLazer Line Stripers.....	16	Safety Lights.....	42	Warning Flags.....	42
Crowd Control Barriers.....	34-35	Line-PRO Paint.....	19	Safety Vests.....	38	Warning Kit, Road.....	42
Curbs, Parking.....	22	Markers Road.....	20	Sand Bags.....	42	Warning Lights, Vehicle.....	41
Curve Delineation Systems.....	13	Markers, Guardrails.....	12	Sand Barrels.....	28	Warning Mats.....	22
Cushions, Crash.....	28-29	Markers, Pavement.....	20	SaniSpray Systems.....	17	Water Walls.....	28
Delineator Installation.....	7	Marking Chalk.....	23	Sanitizing.....	17	W-Beam Guardrail Panels.....	11
Delineators.....	12, 37	Marking Paint.....	19, 23	Scorpion TMA.....	27	Wheel Stops.....	22
Detectable Warning Mats.....	22	Mash Crash Cushions.....	10	Sealant, Road.....	21	Work Zone Rentals.....	8, 9
Detour Services.....	7	MASH Products.....	26	Sign Fabrication.....	6	Work Zone Signs.....	31-32
Disinfectant Sprayers.....	17	Mats, Standing.....	33	Sign Installation Service.....	7	Workwear.....	38-39
DR-46 Motorcycle Barrier.....	10	Max-Tension End Treatments.....	11	Sign Posts & Hardware.....	15	X-Marker Runway Closure.....	24
Drum Channelizers.....	37	Measuring Wheels.....	23	Sign Skids.....	15		

# AWP SAFETY IS YOUR PREMIER RESOURCE



## ONE-STOP SHOP

Planning, crews, and equipment selection from one source



## PURCHASES & RENTALS

A vast selection of quality and affordable equipment



## RELIABLE EQUIPMENT MANAGEMENT

We deliver, move, maintain, and pick up on schedule



## PROFESSIONAL CREWS

Our crews meet the highest standards for training



## 24/7/365 CAPABILITIES

Dedicated system-wide dispatch and integrated network



## LOCAL KNOWLEDGE

We know all applicable state and municipal regulations



## EXPERT CUSTOMER SERVICE

You'll work with responsive and dependable experts



## PLANNING & PERMITTING

We plan the work zone and obtain permits



## LARGE FLEET

Over 620 traffic control equipped vehicles



## EMERGENCY RESPONSE

Response within two hours to over 1,000 incidents annually



1 (800) 343-2650 | awpsafety.com