

# Connected to Safety

Integrated traffic technologies saves lives, improve efficiency and help people get where they're going.



## Data Driven Protection

Stay at the forefront of safety. When you partner with AWP Safety, you benefit from next-generation technology that:

- Improves work zone safety up to 70%
- Gives real-time insights that help enhance safety KPIs and standards
- Optimizes traffic flow and reduces congestion



## Safety Performance

We are relentless in standardizing safety practices and measuring performance. Using advanced software and technologies, we hold ourselves accountable to consistently delivering safety for our customers.

**People.** We are the only traffic control provider to monitor and manage driver qualifications through the Fleet Response real time reporting system. We leverage MVR (Motor Vehicle Report) data to ensure all our drivers are safe drivers.

**Processes.** Intelex software solutions are a crucial part of our Environmental, Health and Safety Platform. We use them to identify performance trends, determine root causes of incidents and make proactive adjustments to our processes and training.

**Vehicle Telematics.** Driving behaviors. Worksite video surveillance. Proactive vehicle maintenance. Fuel efficiency. With Samsara Vehicle Telematics, we track all of this to serve customers efficiently and reduce your risk and liability.

## Automated Work Zone Protection

Motorists are more responsive to Automated Flagging Assistance Devices (AFADs), and 78% prefer them over human flaggers.

**Safety.** Onboard Google/WAZE technology diverts 25% of traffic around the work site entirely, reducing the odds of an accident.

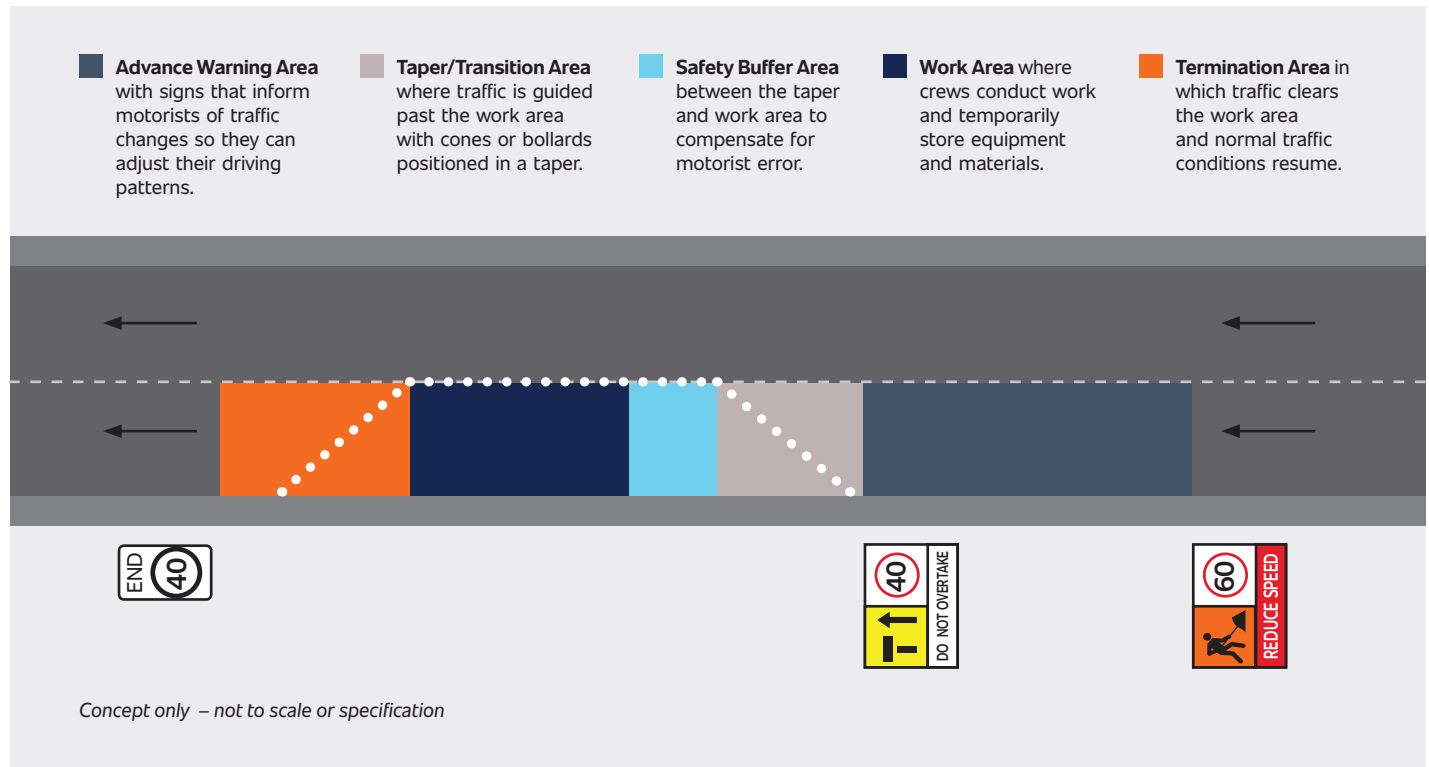
**Coverage.** One Protector safely controls multiple AFADs from a roadside tablet. Fewer Protectors can cover more work zones, providing you excellent availability despite today's labor challenges.

**Reduced Liability.** Built-in surveillance cameras show what really happened in the event of an accident.

## Choosing the Right Solutions

### 1 SAFE:

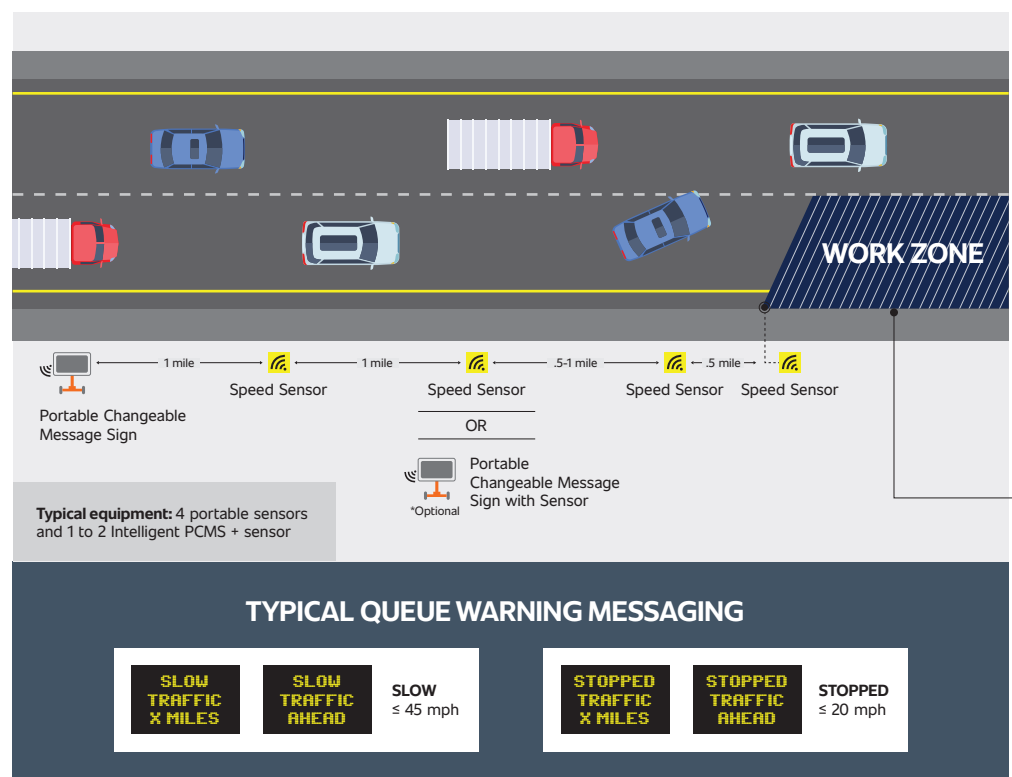
Every safe worksite includes:



### 2 SAFER:

**Queue Warning Systems** use speed sensors, computers, and message boards to automatically collect and convey information to motorists so they can make smarter, faster decisions.

- **Real-Time traffic flow data** provides the most accurate data to help motorists anticipate changing traffic conditions.
- **Portable systems** are ideal for mobile work zones with various locations.
- **Automated technology** improves efficiency by requiring minimal supervision from human operators.
- **Accurate information**



**SAFEST:**

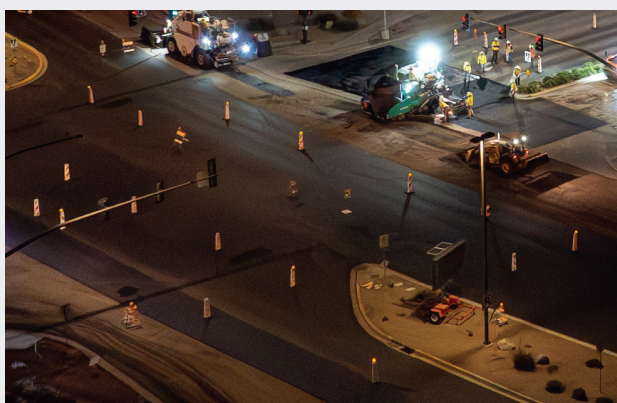
**Advanced Intelligent Transportation Systems** use comprehensive technology to elevate crew and motorist safety.



**Que Warning System** utilizes advanced warning balloon lights in addition to standard message and arrow boards deployed upstream of the merging taper.



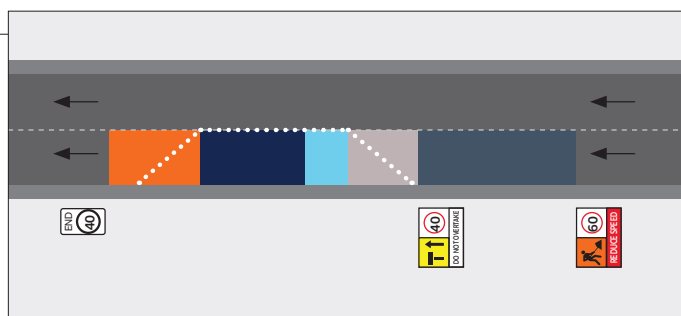
**Portable Rumble Strips** are deployed in travel lanes upstream of the merging taper to provide tactile, audible, and visual alerts as motorists approach a lane closure.



**Sequential Barricade Lamps** create a "runway" approach light for lane closures leading into a worksite. The sequential flash pattern assists motorists in identifying distances and direction of upcoming lane closures.



**Truck Mounted Attenuators (TMAs)** reduce the impact force of potential rear-end collision by placing a heavy vehicle outfitted with an attenuator between traffic and the worksite.





## Technology Enhances Safety

**Intelligent Transportation Systems (ITS)** help motorists make smart choices by sharing real-time data through message boards, live videos, travel info, mobile apps and safety alerts.

- **Prevents accidents** by informing motorists about what to expect
- **Reduces traffic congestion** by routing motorists around worksites
- **Saves money** by lowering accident rates and improving efficient use of your crews and assets



## Traffic Monitoring

Strategically placed traffic monitoring systems reduce rear-end collisions by 45% in active work zones. The data they collect informs future traffic control plans and pinpoints areas to modify in-progress plans for safer results.

**Real-time monitoring.** Camera-equipped devices monitor traffic speed and patterns to measure the effectiveness of your work zone's traffic control plan.

**Easy to use.** With the flip of a switch, equipment locates itself using GPS, gathers data and links to the web to share it with your team.



## Your Single Source for Safety

AWP Safety is North America's leading traffic control company. We protect the people who build and operate infrastructure coast to coast. Our scale, expertise, technology and broad portfolio mean we can take care of all your needs, no matter how complex.

## Schedule Now

Online: [www.awpsafety.com](http://www.awpsafety.com)  
1-800-343-2650

